

Dynamics of Ladder-Type Cable Trays



Dynamics of Ladder-Type Cable Trays



The Ladder Tray features light, rugged, tubular steel construction. It is designed for mechanical support and strain relief in long runs of cable and creates a smooth gradual bend for cable.



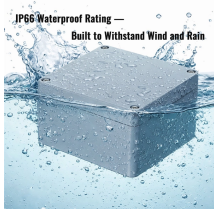
Straight section ladder tray shall be prefabricated structures made from fiberglass reinforced plastic, consisting of two longitudinal members (side rails) connected by transverse rungs, meeting all the ...



With all the choices in cable trays styles, ladder, ventilated, solid bottom and wire basket, it can be difficult to know which is the right one for your application. This bulletin will help provide a few ...



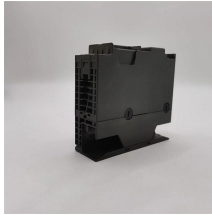
When fitting cable trays and their accessories, the products are cut on site to create changes of direction, adjust sections, etc. Damage can also occur during handling; as a result, both the ...



Explore all types of cable trays—ladder, perforated, basket, solid, and channel. Learn their uses, materials, pros, cons, and key differences.



Fitting and accessories. with the same or different width of the cable run. All fittings are available in sizes and types corresponding to the straight cable tray sections. These fittings include: elbow, ...



This study aims to investigate the mechanisms by which the structure of ladder-type cable trays and the arrangements of cables influence the heat release characteristics during cable fires.



Refers to the approximate height of a cable tray used for specifying. Selecting a specific height will show cable trays with that height, as well as cable tray accessories compatible with that height.



The following recommendations are intended to be a practical guide to ensure the safe and proper installation of cable ladder and cable tray systems and channel support and other support ...



Cable tray must be capable of supporting not just the weight of the cable, but also the weight of any equipment or materials attached to the cable tray. Additionally, dynamic environmental elements ...

Contact Us

For more information, pricing, or custom data center solutions, please contact us:

Website: <https://www.yoahorroenergia.es>

Email: hello@yoahorroenergia.es

Phone: +233 54 318 7269

Address: Plot 28, Spintex Road, Accra, Greater Accra, Ghana

This document is for informational purposes only. Specifications subject to change without notice.

