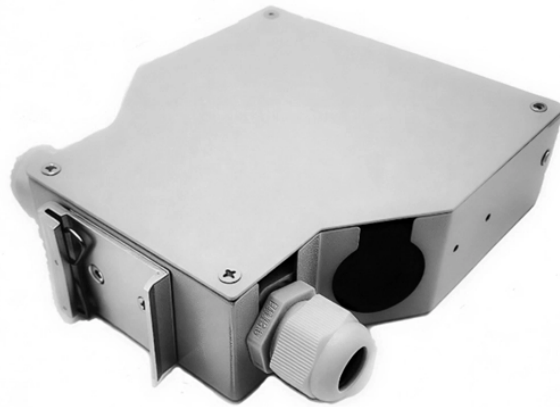


## Dutch Rack IP54







Available in three models—24U with 3.5kW cooling capacity and two 42U options with 3.5kW or 7kW cooling capacity—the SmartCabinet™ ID ensures your equipment is safeguarded from harsh ...



Square mounting holes and numbered rack spaces make equipment installation easy. The adjustable front and rear vertical mounting rails accommodate equipment up to 32.5 inches (82.6 cm) deep, ...



Ideal storage for sensitive rack-mounted equipment that needs extra protection from harsh conditions. Perfect for factories, construction areas, warehouses and other areas high in moisture, dust and ...



It has adjustable pivots that allow the rack to be locked into a closed or open (90-degree perpendicular) position. It minimizes cable flex and facilitates installation and ease of access.

## Contact Us

For more information, pricing, or custom data center solutions, please contact us:

Website: <https://www.yoahorroenergia.es>

Email: [hello@yoahorroenergia.es](mailto:hello@yoahorroenergia.es)

Phone: +233 54 318 7269

Address: Plot 28, Spintex Road, Accra, Greater Accra, Ghana

This document is for informational purposes only. Specifications subject to change without notice.

