

# Drilling holes on the side of the distribution box



## Overview

In this video, we'll show you a simple and easy-to-follow technique to ensure accurate and precise holes in electrical boxes. While junction boxes offer pre-punched openings, certain installations require creating a precise, new hole for specific cable clamps or fittings. Understanding the proper methods for accurately cutting into both metal and plastic enclosures ensures the integrity and regulatory compliance of the. In this comprehensive guide, we'll walk you through the process of drilling holes for electrical outlet s step by step. Before you start any electrical work, prioritizing safety is crucial. Here are some essential safety precautions to keep in mind: Turn Off the Power: Always turn off the power to. The only mounting holes currently in the junction box are in the bottom of the box- there are none on its sides. Just make sure it is reasonably plumb when you trace it. I generally cut a "V" at the bottom left and top right corners of.

## Drilling holes on the side of the distribution box



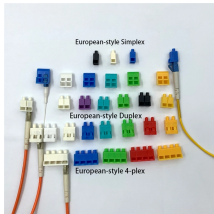
From a technical point of view, it is feasible to drill holes in the explosion-proof box. However, certain safety regulations and technical requirements need to be followed to ensure that the drilling process ...



The only mounting holes currently in the junction box are in the bottom of the box- there are none on its sides. It would be easy enough to simply drill a side hole (s) through the junction box ...



Quazite UL Listed enclosures with holes drilled in the field may qualify for UL Listing as long as the holes do not exceed more than 25% of the area of each sidewall and as long as the holes do not cut into a ...



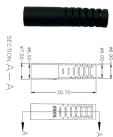
Drill a small pilot hole through the box wall, typically using a 1/4-inch bit, to guide the subsequent cutting tool. When using a hole saw, the pilot bit guides the saw into the material before ...



Drilling holes for electrical outlets is a fundamental skill for any homeowner or DIY enthusiast. By following the step-by-step guide provided in this article and prioritizing safety, you can successfully ...



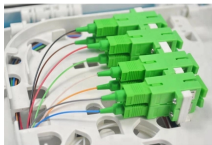
So yes, drilling holes or punching new knock outs in a panel is permitted, but you have to watch other rules about where holes cannot be, or holes left open, etc.



These holes, or “knockouts,” are necessary for running conduit or cables through metal surfaces without damaging the wiring or compromising safety. Knockout punches are specifically ...



Put the box to the wall, trace it and cut it out. Don't worry about using a level because you can adjust the box, device and wall plate to plumb it up. Plenty of wiggle room. Just make sure it is ...



Learn the secret to drilling perfect holes every time! In this video, we'll show you a simple and easy-to-follow technique to ensure accurate and precise holes in electrical boxes.

## Contact Us

For more information, pricing, or custom data center solutions, please contact us:

Website: <https://www.yoahorroenergia.es>

Email: [hello@yoahorroenergia.es](mailto:hello@yoahorroenergia.es)

Phone: +233 54 318 7269

Address: Plot 28, Spintex Road, Accra, Greater Accra, Ghana

This document is for informational purposes only. Specifications subject to change without notice.

