

## Dominic Fireproof Cable Tray Installation Process



### Overview

This document outlines the key requirements for cable tray layout, installation, and fireproofing in industrial and commercial environments. Route Planning and Layout Principles Proper installation of cables in trays is critical for maintaining an efficient and safe electrical system. But before you lay the first tray or clamp down a single cable, you need a solid plan. This guide breaks down the process step by step. Route. Electrical cable tray wall penetration firestopping Scope: Firestopping for busway, cable trays, cables, and trunking passing through walls in enclosed electrical installations. Where cables pass through shafts, walls, slabs, or enter electrical panels or cabinets, openings shall be tightly sealed. In this article today we will talk about the Installation of Cable Tray or Trunking | Method Statement for Electrical Works | Cable Ladder Installation | Electrical Cable Installation | Floor Trunking for Cables Installation | Cable Support System | Wiring Installation | Cable Tray System.

## Dominic Fireproof Cable Tray Installation Process



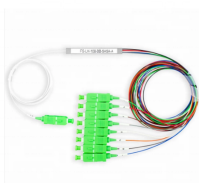
Whether you're building a commercial setup or upgrading an industrial plant, proper cable tray installation ensures neat wiring, safe access, and easy maintenance. But before you lay the first ...



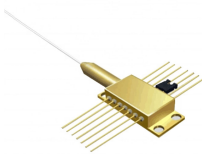
For large openings, install a fire-resistant backing plate before sealing. Layout and positioning must be reasonable to facilitate installation and maintenance. Choose appropriate fire ...



Cable tray cable installation generally follows these steps: Inspect cables before installation Prepare and inspect the tray Set up installation equipment Lay cables correctly in trays ...



These systems not only organize and protect wiring but also play a vital role in preventing the spread of fire through a building. This guide walks through best practices, installation tips, and ...



It outlines the key steps, which include evaluating materials, properly storing and handling components, following approved drawings and specifications for installation, using proper supports and spacing, ...



The method statement is written for the purpose of establishing method and procedures for the installation of cable tray and cable trunking for the building MEP services.



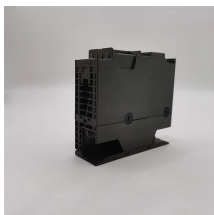
Below is the detailed cable tray installation method statement not only for cable tray but also applicable for GI ladder and trunking for indoor and outdoor applications and in service rooms like pump rooms, ...



Cable tray installation must comply with specific technical standards to ensure electrical safety, system reliability, and long-term maintainability. This document outlines the key requirements for cable tray ...



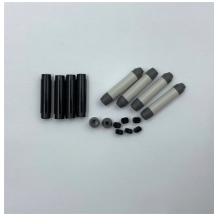
For large openings, install a fire-resistant backing plate before sealing. Layout and positioning must be reasonable to facilitate installation and ...



Cable tray installation must comply with specific technical standards to ensure electrical safety, system reliability, and long-term maintainability. This document ...



The cable tray shall be installed with a 40mm minimum space between the structure and the tray. All cable shall be securely fixed to the tray, work and the complete installation must be carried out in a ...



The Cable Tray system is installed in electrical rooms, plant rooms, and service corridors. This section will guide you through the necessary steps to ensure a successful installation.

## Contact Us

For more information, pricing, or custom data center solutions, please contact us:

Website: <https://www.yoahorroenergia.es>

Email: [hello@yoahorroenergia.es](mailto:hello@yoahorroenergia.es)

Phone: +233 54 318 7269

Address: Plot 28, Spintex Road, Accra, Greater Accra, Ghana

This document is for informational purposes only. Specifications subject to change without notice.

