

Does the spare circuit in the distribution box count as a circuit



Overview

The National Electrical Code (NEC) simply requires that they be identified in the circuit directory. 4 (A) it states that “spare positions that contain unused overcurrent devices or switches shall be described accordingly. ”Can an unused (spare) circuit breaker remain in an electrical panel or does it have to be removed?

Can an unused (spare) circuit breaker remain in an electrical panel or does it have to be removed?

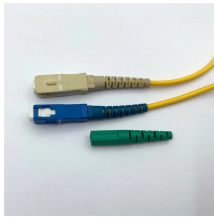
Spares do not have to be removed from the panel. One powers the circuit running to the pump and the other is labeled spare. Although the panel contains conductive metal bus bar. Specifically, the question posed to the task force was, “Does the 2011 edition of NFPA 70®, National Electrical Code®, and subsequent editions require properly labeled spare breakers to be kept in any specific position, either 'on' or 'off'?

” Even though NFPA 70 is silent on the issue, the. When creating an Electrical

Circuits schedule (not panel schedule), it skips over any circuit numbers that have spares and spaces assigned. I'd like to use circuit schedules for quantity takeoff of circuit breakers to submit to Panel manufacturers, but it will not count any spare breakers despite. What is a Distribution Board?

A distribution board or distribution panel (DP) is an important part of an electricity supply system.

Does the spare circuit in the distribution box count as a circuit



The Joint Commission has clarified that it still considers properly labeled spare breakers in the on position to be a safety risk based on the experiences of Joint Commission surveyors, ...



That includes spare positions that contain unused overcurrent devices. Identification must include sufficient detail to allow each circuit to be distinguished from all others.



The committee's answer was a simple, "No." In its 2021 survey, ASHE found that: More than 83% of survey respondents keep spare circuit breakers in the "off" position. More than 5% keep them in the ...



Can an unused (spare) circuit breaker remain in an electrical panel or does it have to be removed? Spares do not have to be removed from the panel. The National ...



Pick the panel after creating the first circuit, and the other circuits should connect to the same panel. Just type "SPARE" into the circuit name when you create the circuit, or you can go to ...



Can an unused (spare) circuit breaker remain in an electrical panel or does it have to be removed? Spares do not have to be removed from the panel. The National Electrical Code (NEC) simply ...



A common point of confusion is the difference between a spare slot and an unused circuit. An unused circuit features a breaker physically installed in the panel but not connected to active ...



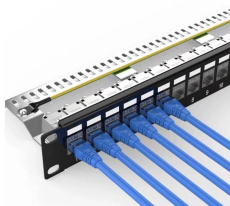
One powers the circuit running to the pump and the other is labeled spare. The spare breaker has the red wire from the pump's circuit connected where the black hot wire normally would be.



A distribution circuit is a circuit that supplies a distribution board or other switchgear and does not extend directly to current-using equipment or a means of connection for such equipment.



Most workplaces rely on an electricity distribution board to divide and route a single source of outside power to multiple smaller circuits around the building. In many of these settings, the ...



Talking to a code pro, the answer is 2 spare spaces if you have a breaker for a range and a breaker for a dryer installed. Otherwise, it's 2 spare spaces + space for a 2 pole if you just have ...

Contact Us

For more information, pricing, or custom data center solutions, please contact us:

Website: <https://www.yoahorroenergia.es>

Email: hello@yoahorroenergia.es

Phone: +233 54 318 7269

Address: Plot 28, Spintex Road, Accra, Greater Accra, Ghana

This document is for informational purposes only. Specifications subject to change without notice.

