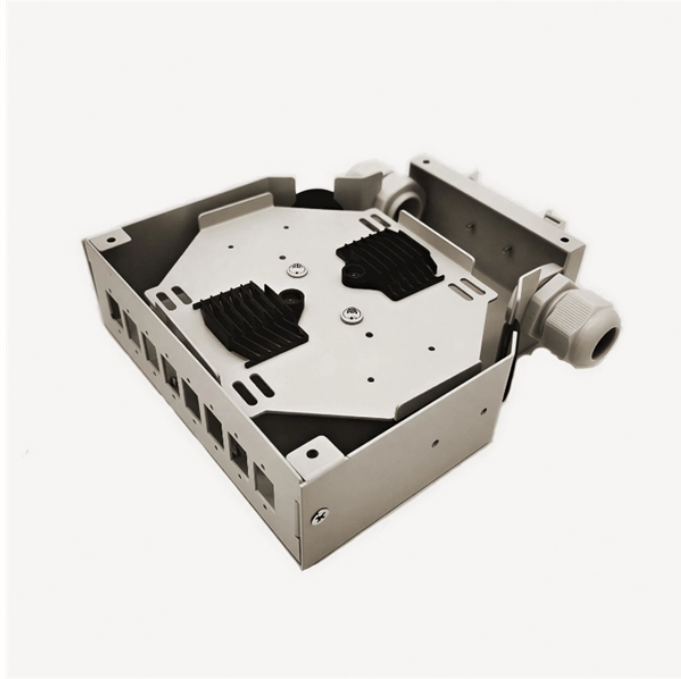


## Does the circuit need to run from the main distribution box



### Overview

The main electrical panel, commonly called the breaker box, is the central distribution point for all power inside the home. A panel might be mounted on the outside of the house, either separate from or combined. At its core, electricity enters your home through the main service panel, where it's divided into circuits that power different areas and appliances. These circuits are protected by circuit breakers or fuses, which prevent overloads and short circuits.



## Does the circuit need to run from the main distribution box



Another arrangement of service equipment is where the meter base and main disconnect are located outside of the house, and the panelboard is separate. The conductors that run from the main ...



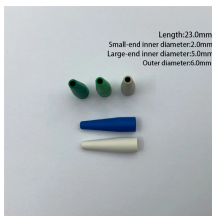
For safety, all circuits should be grounded: A continuous conductor (often solid copper) should run from the neutral connector inside the panel to a ground such as a water pipe or metal rod ...



Another arrangement of service equipment is where the meter base and main disconnect are located outside of the house, and the panelboard is separate. The ...



What Is a Distribution Panel? A distribution panel receives electricity from the main panel and divides it into smaller circuits, sending power to different rooms, floors, or types of equipment. It ...



The main disconnect is housed either in the distribution panel (below) or in its own separate box. This depends in part on the location of the distribution panel.



In this article, we'll walk you through the step-by-step process of how power flows through a distribution box, what components are involved, and why each part is critical for maintaining a stable and secure ...



Power is fed into the box from the main supply. From there it is distributed into various circuits integrated into the corresponding building. This ...



A distribution board, or db box, is like the heart of your electrical system. It sends power from the main source to different circuits in your house or workplace.



Power is fed into the box from the main supply. From there it is distributed into various circuits integrated into the corresponding building. This enables an order and proper distribution of ...



I'm going to start with the main distribution panel. The individual videos that follow will trace each and every circuit in my panel from the beginning to the end device (s) that is fed from that circuit breaker.



The main service panel, also known as the breaker box, is the heart of your home's electrical system. It receives power from the utility company and distributes it to various circuits throughout your house.



I'm going to start with the main distribution panel. The individual videos that follow will trace each and every circuit in my panel from the ...



The main electrical panel, commonly called the breaker box, is the central distribution point for all power inside the home. The main service disconnect feeds the panel's two main bus ...

## Contact Us

For more information, pricing, or custom data center solutions, please contact us:

Website: <https://www.yoahorroenergia.es>

Email: [hello@yoahorroenergia.es](mailto:hello@yoahorroenergia.es)

Phone: +233 54 318 7269

Address: Plot 28, Spintex Road, Accra, Greater Accra, Ghana

This document is for informational purposes only. Specifications subject to change without notice.

