

# Does the access switch enable authentication-free access for its ports



## Overview

1X authentication works by using an authenticator port access entity (the switch) to block ingress traffic from a supplicant (end device) at the port until the supplicant's credentials are presented and match on the authentication server (a RADIUS server). Cisco Meraki MS switches offer the ability to configure access policies, which require connecting devices to authenticate against a RADIUS server before they are granted network access. Aruba ClearPass supports dynamic ACL-based and VLAN-based authorization. ACL-based authorization is classified into static ACL-based and dynamic ACL-based authorization. Imagine a situation where you have a public meeting room equipped with accessible Ethernet ports, and you want to. 802. Read this topic for more information.

## Does the access switch enable authentication-free access for its ports



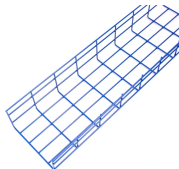
If the identity is valid, the server sends an “Access-Accept” message, and the switch opens the port for full network access. If not, the device is denied access.



In the early IEEE 802 LAN protocols, users can access devices or resources in a LAN as long as they can access the control device (for example, ...



The 802.1x standard defines a client-server-based access control and authentication protocol that prevents unauthorized clients from connecting to a LAN through publicly accessible ports unless they ...



In the early IEEE 802 LAN protocols, users can access devices or resources in a LAN as long as they can access the control device (for example, an access switch ) in the LAN.



If the identity is valid, the server sends an “Access-Accept” message, and the switch opens the port for full network access. If not, the device is denied ...



The MAC Authentication service will handle headless devices like printers, phones, access points and others as well as provide the redirect URL for unknown devices to allow for a captive portal ...



MS Series switches fully support the IEEE 802.1X Standard. Configuring wired 802.1X authentication is often desired in public or communal areas to prevent unauthorized network access.



If you can't use 802.1X but still want to secure your switch ports somehow, you can use MAC Authentication Bypass (MAB). When you enable MAB on a switchport, the switch drops all frames ...



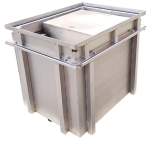
Wired 802.1X offers port-level authentication and access control, ensuring only authorized devices can connect to the network. It enables dynamic VLAN assignment and eliminates the need ...



If you are using Port Security on the switch, configure the switch to allow only 802.1X access on ports configured for 802.1X operation, and (if desired) the action to take if an unauthorized device attempts ...



802.1X authentication works by using an authenticator port access entity (the switch) to block ingress traffic from a supplicant (end device) at the port until the supplicant's credentials are ...



Configuration Precautions The RADIUS shared key configured on the switch and the server must be the same. By default, the switch allows the packets sent to the RADIUS server to pass through. You do ...

## Contact Us

For more information, pricing, or custom data center solutions, please contact us:

Website: <https://www.yoahorroenergia.es>

Email: [hello@yoahorroenergia.es](mailto:hello@yoahorroenergia.es)

Phone: +233 54 318 7269

Address: Plot 28, Spintex Road, Accra, Greater Accra, Ghana

This document is for informational purposes only. Specifications subject to change without notice.

