

Do portable fiber optic distribution boxes need to be connected to power cords



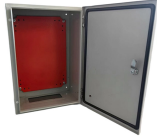
Overview

Nonconductive optical fiber cables are permitted to occupy the same tray or raceway with power conductors and Class 1 circuits. The article categorizes the various types of fiber optic distribution boxes—including wall-mounted, rack-mounted, outdoor, and dome-shaped designs—each optimized for specific installation environments. Key components such as splice trays, connectors, splitters, and patch panels are discussed. As networks grow in complexity and the number of connected devices surges, the challenge of managing, distributing, and protecting these delicate cables becomes critical. This challenge is addressed by a fundamental piece of network infrastructure: the Fiber Termination Box (FTB). They function as junction points that manage, protect, terminate, and distribute fiber optic cables, ensuring efficient data transmission between different. A fiber optic distribution box, also called a fiber distribution box, typically consists of two main parts: the outer shell body and the tray for adapters or splitters in order to protect fiber connector points. The material of the shell body is PC, PP, or ABS plastic. A

fiber pigtail is a specific hardware connection used for cable termination. What do we mean by the “installation process?”

” Assuming the design is completed, we're looking at the process of physically installing and completing the network, turning the design.

Do portable fiber optic distribution boxes need to be connected to p



Easily connect SC or LC fiber optic adapters into an outdoor fiber optic distribution box and be able to split out your bulk fiber from 2 to 48 fibers while simultaneously safeguarding your ...



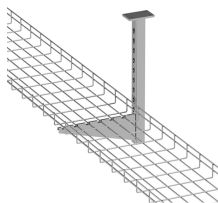
Although most fiber optic cables are not conductive, any metallic hardware used in fiber optic cabling systems (such as wall-mounted termination boxes, racks, and patch panels) must be grounded.



A fiber optic distribution box (FDB) is a protective enclosure for managing fiber optic cables. It organizes connections, splices fibers, and distributes signals in networks like FTTH (Fiber-to-the-Home) or ...



The external patch cords, which will connect to network equipment, are then plugged into the exterior ports of the adapters. Once all connections are made, thorough testing is essential.



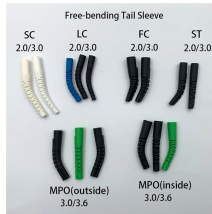
Thus, a fiber termination box is used to terminate the optical fiber cables in the field and connect them to the pigtail by splicing. After an optical cable arrives at the user's end, it is fixed in the ...



You can install unlisted optical fiber cables in building spaces (other than risers, ducts, or plenum spaces), if the length of the optical fiber cable measured from its point of entrance does not ...



FDBs are specifically designed to safeguard delicate fiber optic connections from environmental and physical damage. By protecting splices, connectors, and cables from dust, moisture, UV exposure, ...



A Fiber Distribution Box (FDB) is a component used in fiber optic networks for power distribution and terminal connections. It serves as a junction point where optical signals are ...



Fiber optic distribution boxes are indispensable in contemporary telecommunications infrastructures. They offer organized solutions for managing fiber optic cables, ...



In this kind of fiber cabinet, the backbone fiber optic cable usually does not connect to optical splitters. And the core of the backbone fiber optic cable is connected to distribution optical ...



Fiber optic distribution boxes are indispensable in contemporary telecommunications infrastructures. They offer organized solutions for managing fiber optic cables, facilitating efficient connectivity and ...

Contact Us

For more information, pricing, or custom data center solutions, please contact us:

Website: <https://www.yoahorroenergia.es>

Email: hello@yoahorroenergia.es

Phone: +233 54 318 7269

Address: Plot 28, Spintex Road, Accra, Greater Accra, Ghana

This document is for informational purposes only. Specifications subject to change without notice.

