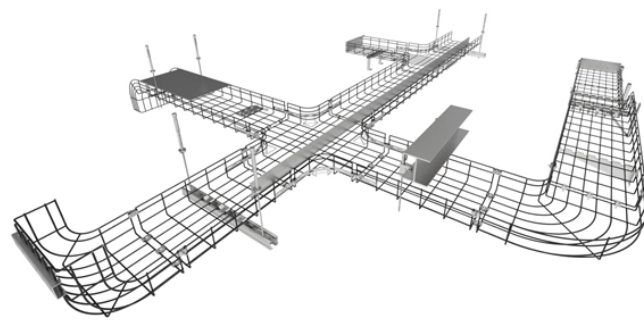


Do cable trays require fireproofing



Do cable trays require fireproofing



These fire-resistant cable trays, although less expensive, do not provide adequate protection against fire. In high-risk areas, the use of non-flame-retardant composites can lead to ...



A generic guideline developed by the Cable Tray Institute indicates that cable trays should not be filled in excess of 40-50% of the inside area of the tray or of the tray's maximum weight based on the cable ...



Use this product in new construction or update your fire protection in a renovation - the optional mounting bracket opens easily allowing retrofit installations.



Cable trays and busways at floor level or at slab penetrations shall have a waterstop no less than 50 mm in height. At slab penetrations, provide ...



OSHA regulations mandate fire protection measures for electrical systems, including cable trays. Ensuring compliance with these regulations is vital for worker safety.



Install fire-resistant wraps, blankets, and coverings around cable trays and conductors. Build fire-rated enclosures around tray runs, transitions, and penetrations to block flame and smoke movement.



Discover the best cable tray fire safety practices for commercial buildings to improve electrical safety and reduce fire risks.



Fire-resistant cable tray and conduit assemblies are designed to withstand extreme temperatures, preventing the spread of fire and ensuring the continued operation of critical equipment.



Cable tray installation must comply with specific technical standards to ensure electrical safety, system reliability, and long-term maintainability. This document outlines the key requirements for cable tray ...



Cable tray installation must comply with specific technical standards to ensure electrical safety, system reliability, and long-term maintainability. This document ...



The mostly combustible cable sheaths and insulation allow a fire to spread along the cable at rapid speed. Our tested solutions for cable fire protection can delay the spread of fire in order to minimise ...



Cable trays and busways at floor level or at slab penetrations shall have a waterstop no less than 50 mm in height. At slab penetrations, provide 20-30 mm of firestopping and install a fire ...

Contact Us

For more information, pricing, or custom data center solutions, please contact us:

Website: <https://www.yoahorroenergia.es>

Email: hello@yoahorroenergia.es

Phone: +233 54 318 7269

Address: Plot 28, Spintex Road, Accra, Greater Accra, Ghana

This document is for informational purposes only. Specifications subject to change without notice.

