

Do cable trays need cover plates



Overview

Due to their exposure to the open air because of the cable trays, the wires contained within need a very durable outer covering. The regulations dictate that the cables must either be Type TC (also known as Tray Rated) or must be metal-armored (Type MC). These essential components: Example: Stainless steel covers meet NEC 392. Introduction and. maintain spacing or to keep cables in place when the tray is ect the minimum bend ra-dius for cables as they exit the bottom of the cable tray. A rung spacing of 6 to 9 inches (150 to 230 mm) is preferable when the cable tray cont d for instrumentation and control applications that require. It is understood that cable trays in the construction of installation often encounter some site to install protective cover, but what is the specific situation?

Now let's see why the cable bridge should be protected. In practice, covers help minimize environmental exposure, maintain code compliance, and improve system lifespan. In this guide, you will learn about the different types of cable.

Do cable trays need cover plates



This article explains the main requirements and good practices for cable tray systems, including tray types, materials, loading, supports, bonding, cable selection, and installation details.



The short answer is no. Due to their exposure to the open air because of the cable trays, the wires contained within need a very durable outer covering. The regulations dictate that the cables ...



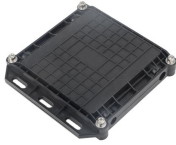
Explore cable tray cover types, materials & standards to optimize safety and system ROI. Read more in our expert guide.



A complete guide to cable tray cover types: Compare 9+ designs, material specifications (NEMA/IEC), selection factors & maintenance best practices.



First, if the cable tray is installed outdoors, the protective shield must be installed on the top or every layer. Second, if the installation site is susceptible to mechanical damage or a lot of dust ...



Usually, it has another section that encloses the cables within the tray called a “cover” or “lidding” section. That is, it covers the top section of the cable tray. In this guide, you will learn about ...



All gaps inside and around metal trunking must be sealed tightly and be complete both internally and externally. Cover plates should be square, of consistent suitable dimensions, painted ...



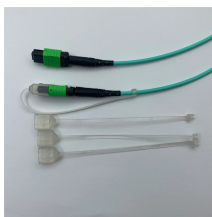
As cable trays are typically fastened using direct bolted connections, which provide bonding, bonding jumpers are only required at adjustable splice plates, expansion plates and non-continuous sections ...



Where cable trays contain power and lighting conductors, ventilated cover are preferable to solid covers since the ventilated covers allow the cable heat to be vented from the cable tray.



All gaps inside and around metal trunking must be sealed tightly and be complete both internally and externally. Cover plates should be square, of ...



While many cable trays remain uncovered, those that run under or along the floor require a strong and sturdy cable tray cover for continuous employee safety. ...



Conductors used in cable tray must be specified in Table 19 of the CEC and, except where permitted under paragraphs [12-2202(2)] and [(3)], covered by a continuous metal sheath or an interlocking ...

Contact Us

For more information, pricing, or custom data center solutions, please contact us:

Website: <https://www.yoahorroenergia.es>

Email: hello@yoahorroenergia.es

Phone: +233 54 318 7269

Address: Plot 28, Spintex Road, Accra, Greater Accra, Ghana

This document is for informational purposes only. Specifications subject to change without notice.

