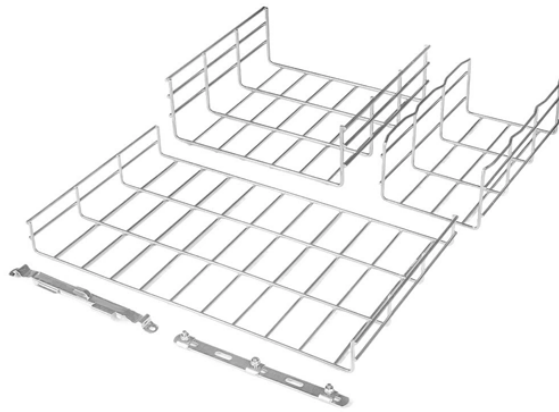


## Do all power switches come with cable management racks



## Do all power switches come with cable management racks



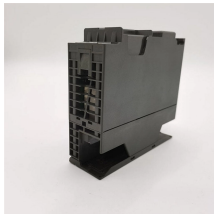
In summary, the patch panel vs switch comparison comes down to their roles: an Ethernet patch panel focuses on passive cable termination and cable organization, while a network ...



Horizontal cable managers are a waste of vertical space. Always install a good, double-sided vertical cable manager. You want to give the installer someplace to route the permanent ...



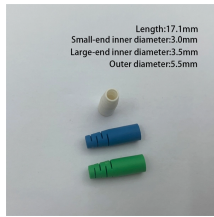
This comprehensive guide provides a detailed walk-through of effective cable management strategies for patch panels and switches, geared towards enhancing the efficiency of ...



In a split stack, depending on where the active and standby switches are located, either two stacks might be formed (with the standby taking over as the new active switch in the newly ...



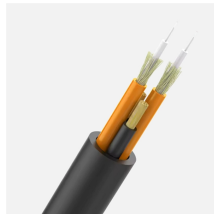
Modern network racks face new physical constraints: deeper switches, hotter PoE++ loads, and thicker Cat6A cabling. A standard 48-port PoE++ switch now generates 600W+ of ...



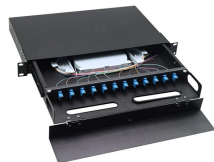
Schneider Electric offers a large selection of vertical and horizontal cable managers for enclosures to address today's cable routing demands. Routing cables across the tops of enclosures has distinct ...



They come in different types, like standard server cabinet, colocation server cabinets, air-conditioned options, quiet setups, and seismic racks. Each ...



Network cabinets house network switches and patch panels. These cabinets have the highest concentration of cabling in the data center, making patch cord management even more critical and ...



Our comprehensive offering of vertical cable management, horizontal cable management, and rack solutions reduces space required to route, manage and protect high cable capacities, providing the ...



This article explores how power is connected inside modern data center racks, examining the flow of electricity from facility power feeds to rack ...



Horizontal cable managers are a waste of vertical space. Always install a good, ...



Use rack mount patch panels and cable managers along with vertically mounted cable managers to provide pathways for patch cords transcending from top of rack patch panels to bottom or rack switches.



To avoid “spaghetti cabling” and lost data caused by damaged cables, you'll want to use a number of these cable management tools. They help clean up the clutter in server rooms, network racks and in ...



Modern network racks face new physical constraints: deeper switches, hotter PoE++ loads, and thicker Cat6A cabling. A standard 48-port ...



This comprehensive guide provides a detailed walk-through of effective cable management strategies for patch panels and switches, geared towards ...



This guide breaks down the entire switch rack installation process into simple, actionable steps. We'll go beyond the basics to explain the “why” behind each step, ensuring your installation is ...

## Contact Us

For more information, pricing, or custom data center solutions, please contact us:

Website: <https://www.yoahorroenergia.es>

Email: [hello@yoahorroenergia.es](mailto:hello@yoahorroenergia.es)

Phone: +233 54 318 7269

Address: Plot 28, Spintex Road, Accra, Greater Accra, Ghana

This document is for informational purposes only. Specifications subject to change without notice.

