

Distribution boxes of level two or above



Distribution boxes of level two or above



Comparison of Specific Applications of Enclosures for Indoor Hazardous Locations (If the installation is outdoors and/or additional protection is required by Table 1 and Table 2, a combination-type ...



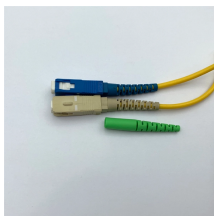
Designed for construction or large-scale projects as a main distribution point. Built to meet specific safety and operational standards for temporary construction sites.



D-boxes may be rectangular, square or round, may be made of concrete or polyethylene, and have 3, 5, 7 or more outlets. They must sit on solid, level ground and must be watertight after installation.



Distribution boxes supplying power to important or sensitive equipment. Purpose Further absorb the residual surge energy after Level 1 protection and enhance the ability to suppress transient ...



But here's what most manuals won't tell you: two boxes with similar appearances can perform like completely different animals in challenging environments. The devil's in the rating details. Let's cut ...



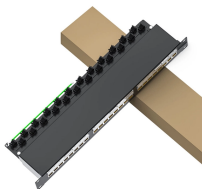
Three level distribution refers to the general distribution box, distribution box, switch box. Two-level protection refers to the leakage protection of the main distribution box and switch box.



Learn everything about DB box (distribution box): what they are, how they work, wiring diagrams, types, and how to choose the right one.



Distribution boards shall be protected against corrosion. Any point of a distribution board that has to be reached during normal operation, must not exceed a height of 2 200 mm above floor ...



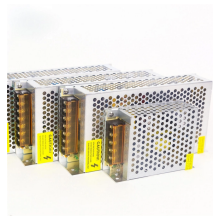
As for the equipment inside, there are certain differences: the first level distribution cabinet generally has isolation switches, circuit breakers, leakage protectors, etc., the second level ...



American Distribution Boxes are made of high-density polyethylene for years of dependable use. They are non-corrosive, strong, and lightweight for easy ...



In order to allow both telecommunications and power cables in a cable tray or cable runway, they must be ?, as required by the National Electrical Code (NEC). A minimum of ? of headroom shall be ...



Where two or more drain lines are installed, an approved distribution box of sufficient size to receive lateral lines shall be installed at the head of each disposal field. The invert of outlets shall be level, ...



Distribution boards shall be protected against corrosion. Any point of a distribution board that has to be reached during normal operation, must not ...



"Two-level protection" mainly refers to the use of leakage protection measures. In addition to installing leakage protector in the last level switch box, one-level leakage protector should also be installed in ...

Contact Us

For more information, pricing, or custom data center solutions, please contact us:

Website: <https://www.yoahorroenergia.es>

Email: hello@yoahorroenergia.es

Phone: +233 54 318 7269

Address: Plot 28, Spintex Road, Accra, Greater Accra, Ghana

This document is for informational purposes only. Specifications subject to change without notice.

