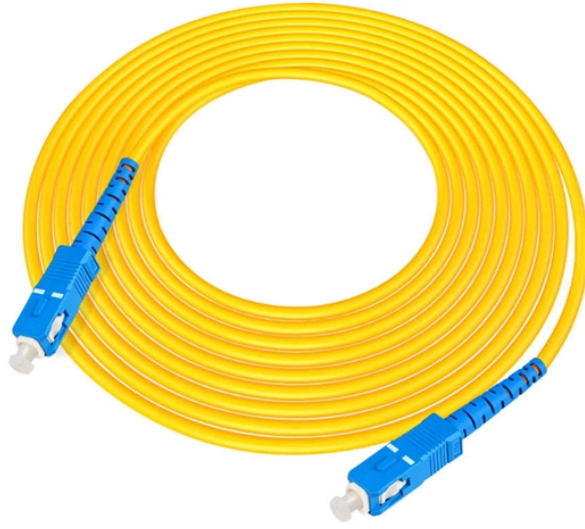
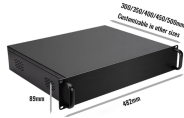


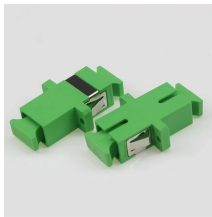
Distribution box protection resistor



Distribution box protection resistor



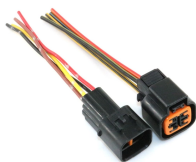
Find support resources for all your needs, in one place. Schneider Electric USA.



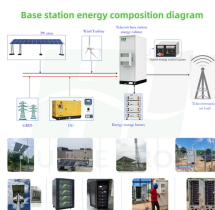
With the durability, robust IP67-rated protection, and resistance to vibration and environmental factors, these boxes deliver reliable performance in harsh conditions.



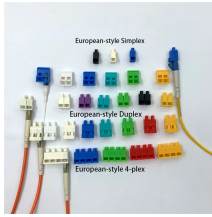
With a clear cover for easy monitoring, flame-resistant materials, and effortless wall mounting, this breaker box is perfect for solar systems, EV charging stations, and more.



Circuit breakers are grouped in breaker boxes or electrical panels and come in single-pole or double-pole options. A ground-fault circuit interrupter circuit breaker (GFCI circuit breaker) is designed to cut ...



The company specializes in the production of miniature circuit breakers, SPDs, fuses, solar connectors, cable connectors, distribution boxes and combiner boxes, and has CE, TUV, IEC and ISO9001 ...



With a clear cover for easy monitoring, flame-resistant materials, and effortless wall mounting, this breaker box is perfect for solar ...



IP represents the international protection level (Ingress Protection), 65 means dustproof level 6 and waterproof level 5. This grade of distribution box is highly waterproof and can be used in outdoor ...



Each enclosure delivers dependable IP65–IP68 sealing for outdoor and industrial use, with options for plastic waterproof distribution box housings and DIN rail waterproof electrical distribution box ...



The electrical power distribution box is vital to ensuring safe, efficient, and scalable power management. By choosing CSQ Electric, customers benefit from advanced product design, strict quality assurance, ...



The BOX (grid, screened cover or solid bottom plates) Series offers excellent protection and safety. A welded frame construction for large applications is utilized to provide a robust design for resistor ...



☐IP65 Waterproof☐Our circuit breaker protective box shell is made of ABS materials, and is IP65 engineering-grade waterproof. It also has the function of preventing snow and rain, which can meet ...

Contact Us

For more information, pricing, or custom data center solutions, please contact us:

Website: <https://www.yoahorroenergia.es>

Email: hello@yoahorroenergia.es

Phone: +233 54 318 7269

Address: Plot 28, Spintex Road, Accra, Greater Accra, Ghana

This document is for informational purposes only. Specifications subject to change without notice.

