




# **Distribution Box XRM External Dimensions**

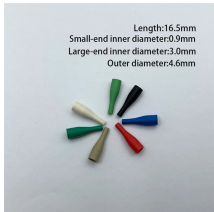



## Distribution Box XRM External Dimensions

	<p>Our distribution boxes are perfect for industrial environments, catering to automation, robotics, and processing facilities. They provide cost-effective solutions through automated dispensing and ...</p>
---	--

	<p>Equipped with specialized hinge structure, which can prevent the flameproof joints from damage when opening and closing the panels, and greatly prolong the service life of box. The boxes can be ...</p>
---	--

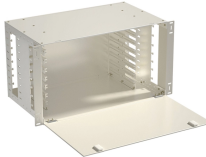
	<p>Eaton's XBoard panelboards have evolved through an intimate knowledge and feedback from Electrical Contractors, Consulting Engineers and End Users to provide an efficient solution for commercial and ...</p>
---	---

	<p>Metal Distribution Box Features Continuously welded seams Foam-in-place seamless gasket 120-degree opening heavy-duty industrial hinges IP66 protection rating against dust and water according ...</p>
---	--

	<p>Choose from our selection of power distribution boxes in a wide range of styles and sizes. Same and Next Day Delivery.</p>
---	---



Box is closed structure, with steel plate bending welding or special profile assembly and local welding, with beautiful appearance, high strength characteristics; The components are fixed on the beam or ...



Easy Installation of outgoing The design of the pan assembly facilitates the installation of outgoing devices. Availability of mixing Mixing two different types of outgoing devices can be provided in ...



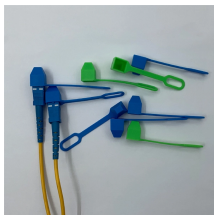
Movable guide track support plate can be hung outside concealed installation box to connect wires without space constraint inside case body, Elliptical hole is provided in guide track support plate to ...



The Vertiv™ NetSure™ External Distribution Box (EDB) provides an enclosure housing two (2) DC distribution panels and alarm cards, a fiber termination and storage chamber, and a cable entry ...



XRM lighting distribution box is a lightweight distribution device indispensable for secondary distribution in various industries. With the improvement of electrical component quality and the introduction of ...



Everything from standard sized pull boxes to custom splitter troughs and everything in-between. We have you covered, for all NEMA ranges and with all appropriate certifications.



It is mainly used for the reception and distribution of electric energy in three-phase AC power systems, as well as the starting, switching, and operation of high-voltage motors.

## Contact Us

For more information, pricing, or custom data center solutions, please contact us:

Website: <https://www.yoahorroenergia.es>

Email: [hello@yoahorroenergia.es](mailto:hello@yoahorroenergia.es)

Phone: +233 54 318 7269

Address: Plot 28, Spintex Road, Accra, Greater Accra, Ghana

This document is for informational purposes only. Specifications subject to change without notice.

