

Dimensions and parameters of low-voltage complete sets of equipment for local area networks



Overview

The following aspects should be considered in particular when planning low-voltage main distribution system: Point № 1- Maximum permissible panel equipment (for example, number of LV HRC in-li).



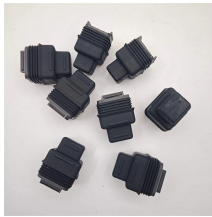
Dimensions and parameters of low-voltage complete sets of equipment



This section displays sample floor plans of PoE low-voltage lighting solutions from various manufacturers, showing how the PSEs connect to the PDs ...



We provide the world's largest collection of linked research data, accessible via our web platform and time-saving, workflow-based applications. The Dimensions database consists of vast amounts of ...



How Many Dimensions Are There? There are four dimensions in the observable universe. We live in a four-dimensional universe defined by three spatial dimensions and one time ...



Dimension is used as a description of the size of an object. For example, the length and width describe the dimension or size of a rectangle. The length, width, and height describe the dimensions, or size, ...



Explore Chennuo Electric's range of high and low voltage complete sets, designed to ensure the reliable operation of power systems. Our solutions cater to a wide range of applications, offering stability and ...



This video will provide some basic knowledge on the composition of low-voltage switchgear and enable you to better identify components of low-voltage switchgear.



Equipment to be supplied under this contract must be identical in all respects and it shall be possible to interchange such equipment should it become necessary.



Integrated high and low voltage complete sets of equipment providing comprehensive power distribution solutions for industrial, commercial and energy systems.



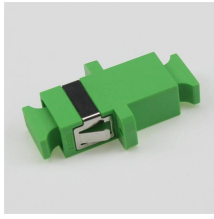
GCK is a Withdrawable Low Voltage Complete-set Switchgear Equipment with high-reliability, cheaply. GHS168 is our company absorbing foreign technology and developed the design of the low-voltage ...



Power Specifications 93 mm (3.66 in) 173 x 93 x 35.75 mm (6.8 in x 3.66 in x 1.4 in) 0.65 kg (1.43 lbs)



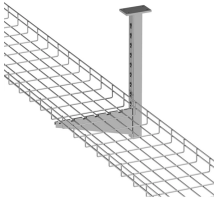
To ensure that the most economical design can always be selected, the main features of low voltage switchgear should be weighed against each other and a decision be made before ...



Scaled 2D drawings and 3D models available for download. Updated daily. A comprehensive reference database of dimensioned drawings documenting the standard measurements and sizes of the ...



The high and low voltage switchgear produced by Jiangsu Xinhong Electrical Equipment Co., Ltd. is a type of power equipment that plays a role in power systems such as switching, control, or protection. ...



In its simplest form: a line describes one dimension, a plane describes two dimensions, and a cube describes three dimensions. (See Space and Cartesian coordinate system.)



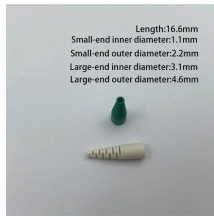
The present document is designed to provide general technical information about the selection and application of low-voltage switching and control devices and does not claim to provide a ...



Re-imagining discovery and access to research: grants, datasets, publications, citations, clinical trials, patents and policy documents in one place.



Geometric dimensions, the most common type, are usually related to actual places. Topological dimensions focus on the connectedness and continuity of spaces, while fractal ...



There are many dimensions [= aspects] to the problem. The social/political/religious dimensions of the problem must also be taken into account.



Our books on electric power distribution are intended to support you in your work as a planner and to provide you with a continuously updated and dependable instrument. Various volumes under the ...



Dimensions or size can be defined as a measure of spatial extent especially for width, height, depth and length. In today's world, practically everything you use daily can be measured.



In Geometry we can have different dimensions. The number of dimensions is how many values are needed to locate a point on a shape.

Contact Us

For more information, pricing, or custom data center solutions, please contact us:

Website: <https://www.yoahorroenergia.es>

Email: hello@yoahorroenergia.es

Phone: +233 54 318 7269

Address: Plot 28, Spintex Road, Accra, Greater Accra, Ghana

This document is for informational purposes only. Specifications subject to change without notice.

