

Detailed Explanation of SC-LC Fiber Optic Patch Cords



Overview

SC and LC patch cords are fiber optic cables that use in FTTH communication networks. They are essential for connecting devices such as switches, routers, and transceivers. It can be. SC connectors provide reliable performance with a square-shaped connector, while LC connectors offer high-density connectivity with a smaller rectangular design. A good connector: Provides low insertion loss (minimal signal attenuation). 5 dB or more of unnecessary loss — the difference between a link that works reliably for years and one that fails under load.



Detailed Explanation of SC-LC Fiber Optic Patch Cords



Learn the differences between ST, SC, FC, and LC fiber connectors. Explore connector types, PC/UPC/APC polish, single-mode vs multi-mode applications.



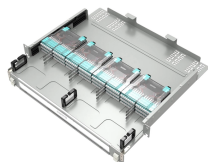
An optical fiber patch Cable is a jumper wire used to connect from equipment to an optical fiber cabling link, and it is usually used for the connection between an optical transceiver and a ...



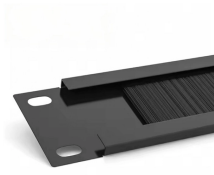
This comprehensive guide unpacks the nuances of SC and LC patch cords, from their structural designs and technical specifications to their ideal use cases.



This guide will help you quickly understand the main types of fiber patch cords and how to choose the right solution for your project - and how ZION can support you with stable quality, ...



Compare LC, SC, FC & ST fiber-optic connectors — size, coupling, and ideal use cases — to help you choose the best fit for your network setup.



SC and LC patch cords are fiber optic cables that use in FTTH communication networks. They are essential for connecting devices such as switches, routers, and transceivers. SC patch ...



Choosing the wrong fiber optic connector can cost you 0.5 dB or more of unnecessary loss — the difference between a link that works reliably for years and one that fails under load. With SC, LC, and ...



Learn about SC, LC, FC, and ST fiber optic patch cords, their uses in FTTH, telecom, and data centers, and how to choose the right type.



Among the most common connectors are LC and SC types, each designed for specific needs and environments. This article delves into the differences between LC and SC fiber ...



Learn the differences between ST, SC, FC, and LC fiber connectors. Explore connector types, PC/UPC/APC polish, single-mode vs multi-mode ...



A comprehensive guide to fiber optic connectors including FC, SC, LC, ST, and MPO/MTP types.

Contact Us

For more information, pricing, or custom data center solutions, please contact us:

Website: <https://www.yoahorroenergia.es>

Email: hello@yoahorroenergia.es

Phone: +233 54 318 7269

Address: Plot 28, Spintex Road, Accra, Greater Accra, Ghana

This document is for informational purposes only. Specifications subject to change without notice.

