

# Density of photovoltaic lines running on cable trays



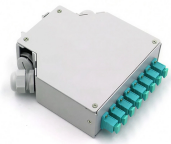
## Overview

The NEC rule requires that the cable cross-sectional areas together may not exceed 50% of the tray area (width x depth = fill). Cables will nearly completely fill the cable tray when reaching the 50% cable fill, due to empty space between the surface of the cables. TIA recommends 40%. In the 2023 NEC ®, language was added in Article 690 to provide additional details for single-conductor PV wire smaller than 1/0 AWG installed in cable trays. 31 (C) (2) has allowed the use of PV or distributed generation (DG) cable in cable trays for PV installations but until this. In this installment of our Code Corner series, Ryan Mayfield focuses on the 2023 National Electrical Code (NEC) changes concerning cable trays, particularly section 690. and if I use a. us-trations without notice. We want each and every experience with our.

## Density of photovoltaic lines running on cable trays



Unless the tray run is at eye level or located in a prominent location, it is not considered good engineering practice nor economical to restrict deflection of ladder tray.



The NEC rule requires that the cable cross-sectional areas together may not exceed 50% of the tray area (width x depth = fill). Cables will nearly completely fill the cable tray when reaching the 50% ...



Section 690.31 (C) (2) has allowed the use of PV or distributed generation (DG) cable in cable trays for PV installations but until this code change, there really hasn't been any direction given on adjustment ...



APPLICATION: INSULATION: Copper Photovoltaic Cable is primarily used for interconnection wiring of grounded and ungrounded photovoltaic power systems. installed in outdoor cable trays. The PV ...



The guidelines cover considerations for the weight and number of cables, space for future expansion, segregating cable types, bundling multicore cables, and using formulas to calculate the required ...



This condition only applies for ladder-style cable trays, where it's uncommon that you'd even use that type of tray for collecting individual string wires anyway.



When fitting cable trays and their accessories, the products are cut on site to create changes of direction, adjust sections, etc. Damage can also occur during handling; as a result, both the ...



Historically, the NEC has allowed cable trays, but has lacked specific guidelines for sizing conductors and using smaller conductors like PV wire and DG cable on rooftops. The 2023 update ...



Since the early days of grid-tied PV installations, installers have been struggling with the best options for securing conductors in a system that is expected to last 25 or more years.



TRACK 2 PILE Quick assembly system The cable is dropped on the tray without any obstacle No holes in the pole are required Possibility of separating data and power Possibility to install cover for UV ...

## Contact Us

For more information, pricing, or custom data center solutions, please contact us:

Website: <https://www.yoahorroenergia.es>

Email: [hello@yoahorroenergia.es](mailto:hello@yoahorroenergia.es)

Phone: +233 54 318 7269

Address: Plot 28, Spintex Road, Accra, Greater Accra, Ghana

This document is for informational purposes only. Specifications subject to change without notice.

