

# **Dedicated aggregation switch for optical modules**



## Dedicated aggregation switch for optical modules



Discover the PFS4226-24ET-240 Hardened Optical and Electrical Aggregation Switch user manual. Learn about safety guidelines, installation steps, initial setup procedures, maintenance ...



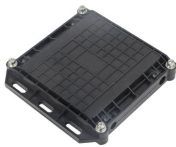
OptoConnect Aggregation Fiber Shuffle Boxes Available in many RU sizes, fully tested and ready for installation, OptoConnect Aggregation Fiber Shuffle Boxes support simple-to-complex fiber routing ...



Developed for long distance fiber installations. Equipped with eight SFP+ ports, two additional SFP28 ports and one RJ45 console port for configuration. With AXIS D8308 Fiber Aggregation Switch you ...



This series of switches adopts advanced hardware architecture design and is equipped with Ruijie Networks' new modular operation. The system provides faster hardware processing ...



SFP aggregation switches support a wide range of SFP or SFP+ modules, enabling connectivity with different types of network interfaces. This flexibility allows organizations to mix and match modules ...



Scalable and flexible With AXIS D8308 Fiber Aggregation Switch you can connect multiple Axis devices using fiber midspans over long distances. It also enables easy expansion by simply adding more ...

Rear of the optical fiber distribution box



In H3C open application architecture (OAA), the switch can accommodate high-performance OAP modules to offer dedicated services such as firewall, IPS, or load balancing in addition to ...



Explore converged optical aggregation solutions spanning access edge and aggregation layers, supporting packet, optical, and legacy technologies on scalable, carrier-grade platforms.



Small-scale Fabric implementation via the Z9432FON switch in leaf and spine along with S-Series 10/25/40/50/100GbE ToR switches enabling costeffective aggregation of 100/400 uplinks



An 8-port, Layer 2 switch made for 10G SFP+ connections.

## Contact Us

For more information, pricing, or custom data center solutions, please contact us:

Website: <https://www.yoahorroenergia.es>

Email: [hello@yoahorroenergia.es](mailto:hello@yoahorroenergia.es)

Phone: +233 54 318 7269

Address: Plot 28, Spintex Road, Accra, Greater Accra, Ghana

This document is for informational purposes only. Specifications subject to change without notice.

