

## Damage to external lines of communication tower



## Damage to external lines of communication tower



Repairs to this equipment should be made only by an authorized service technician or facility designated by the supplier.



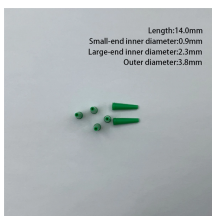
Tissue damage in humans could occur during exposure to high RF levels because of the body's inability to cope with or dissipate the excessive heat that could be generated.



The mitigation objective of this Fact Sheet is to improve the resilience of communications towers, masts and antennas that support vital communications functions at critical facilities so they can continue to ...



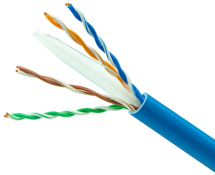
When cell towers collapse, and connectivity is lost, people struggle to contact emergency services and loved ones and access real-time information about the crisis. Communication towers ...



Radio and other telecommunication failures occur when there is an internal or external interruption of communications by either party that results in difficulty transporting a message as it was intended ...



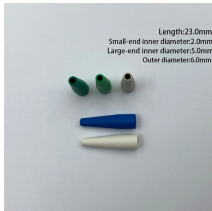
Burying power lines protects lines from exposure to external threats including high winds and falling branches, wildfires, extreme heat or cold, icing, dirt/dust/salt accumulation, and animals; but may ...



In order to know the operational condition of communication towers and understand the structural damage in time, this paper combines the AHP method to establish a hierarchical condition ...



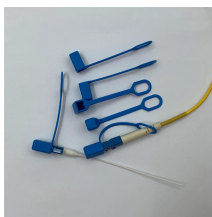
Because a communications tower is continuously exposed to the weather, which at times is severe and may cause damage, regular assessment and maintenance is ...



The present case of interest here is about the collapse of a telecommunication tower in a public institution. In this brief, the standard material specifications for a communication tower are first ...



This is a list of catastrophic collapses of broadcast masts and towers. Masts and towers can collapse as a result of natural disasters, such as storms and fires; from engineering defects; and from accidents, ...



Site Specific Rescue Plan (Included in Fall Protection?) CRANES AND OTHER EQUIP.



At Penn-Tech International, we specialize in providing comprehensive telecom tower maintenance services, including inspections, repairs, and upgrades to ensure that your towers are operating at ...



Communication towers are some of the tallest structures across the landscape and birds are regularly found dead around these towers (Longcore et al. 2012a).

## Contact Us

For more information, pricing, or custom data center solutions, please contact us:

Website: <https://www.yoahorroenergia.es>

Email: [hello@yoahorroenergia.es](mailto:hello@yoahorroenergia.es)

Phone: +233 54 318 7269

Address: Plot 28, Spintex Road, Accra, Greater Accra, Ghana

This document is for informational purposes only. Specifications subject to change without notice.

