

DSPC Explosion-proof Distribution Box Price



DSPC Explosion-proof Distribution Box Price



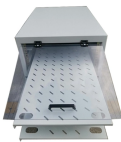
Find reliable explosion proof distribution boxes for safe and efficient electrical control in hazardous environments. Shop our durable, IP66-rated solutions.



An explosion-proof distribution box is a rugged enclosure for hazardous areas, safely delivering power while preventing sparks or heat from igniting flammable surroundings.



Distribution Boxes BXM (D)51 Series Explosion proof Distribution Boxes Lighting/Power (Ex d e IIB)
Distribution Boxes BXM (D)53 Explosion proof Distribution Boxes Lighting/Power (Ex d e IIC) ...



These NEC-rated enclosures are often used to protect your people and parts from explosive risks in plants that handle or make fuel, bulk powders, and chemicals. Plus, they lock out water to keep your ...



Kaiwei products have passed ATEX, CCC, CE, INGRESS PROTECTION, factory explosion-proof certification and ISO9001-2000 international quality system certification.



Durable Hexlon Explosion Proof Distribution Boxes and Electrical Enclosures, IECEx and ATEX certified for Zone 1 and Zone 2.



Due to US customs policies, the buyer of this item will need to pay import fees to the shipping carrier prior to delivery. Learn more. Import fees due prior to delivery.



Take control of your electrical safety today with this complete set of customized distribution boxes. Choose an explosion-proof distribution box for reliable power distribution, easier maintenance, and ...



Explosion-proof distribution boxes are designed to safely control and distribute electrical power in hazardous environments, preventing ignition risks.

Contact Us

For more information, pricing, or custom data center solutions, please contact us:

Website: <https://www.yoahorroenergia.es>

Email: hello@yoahorroenergia.es

Phone: +233 54 318 7269

Address: Plot 28, Spintex Road, Accra, Greater Accra, Ghana

This document is for informational purposes only. Specifications subject to change without notice.

