






Cost Calculation Table for Distribution Box



Overview

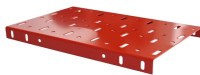
Homeowners typically pay for a distribution box replacement based on box size, amperage, wiring needs, and permit requirements. The main drivers are panel capacity, existing wiring condition, permit requirements, and whether any Upgrade to. Calculation method of distribution box: $A = (\sum B + C) * K$ XL-21 low-voltage power cabinet product introduction XL-21 series power distribution box is suitable for low-voltage power distribution systems of power plants, substations, petroleum, chemical, metallurgy, machinery and other factories and mining. Homeowners typically pay for replacing a septic distribution box based on site access, material type, and labor. The price is driven by box type, piping connections, and the need for trenching or backfilling.

Cost Calculation Table for Distribution Box

 <p>Pre-Terminated Patch Panel</p> <p>● Full application support ● Flexible configuration ● Modular design</p> <p>● 24 ports ● 12 ports ● 6 ports</p>	<p>Discover essential tips on how to determine the price of the distribution box for your power system needs.</p>
	<p>Explore the complete breakdown of distribution box costs, including safety features, scalability options, and operational benefits. Learn how to maximize your investment in electrical distribution systems.</p>
	<p>The Suggested Retail price column, also referred to in the industry as the third column, end column or best column are the manufactures' most current published prices. The Average Cost column ...</p>
	<p>Enter panel size and installation cost details to estimate the total cost of installing an electric panel.</p>
	<p>This document's assumptions and cost data are reviewed yearly with stakeholders. All cost estimate data in this document are in 2023 U.S. dollars. Cost data was escalated from 2023 ...</p>



Typical cost ranges for replacing a distribution box or service panel in the United States vary widely based on panel size, amperage, labor, and whether a full service upgrade is needed.



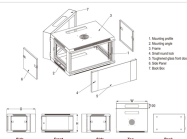
Homeowners typically pay for a distribution box replacement based on box size, amperage, wiring needs, and permit requirements. The price range reflects labor, materials, and ...



Key cost drivers include panel amperage, indoor vs outdoor location, wiring length, and whether a full panel upgrade or rerouting is needed. The article outlines cost ranges, per-unit pricing, ...



Overview Of Costs Cost ranges reflect typical residential septic systems in the United States, with total project estimates often falling between \$1,100 and \$5,000 depending on access ...



Calculation method of distribution box: $A = (\sum B + C) * K$ A: Distribution box price B: Total price of electronic components C: Distribution box price (six-sided area and *130 USD) K: coefficient ...

Contact Us

For more information, pricing, or custom data center solutions, please contact us:

Website: <https://www.yoahorroenergia.es>

Email: hello@yoahorroenergia.es

Phone: +233 54 318 7269

Address: Plot 28, Spintex Road, Accra, Greater Accra, Ghana

This document is for informational purposes only. Specifications subject to change without notice.

