

# Core Switch of the Information Intranet



## Overview

Enables IP routing between VLANs, subnets, and security zones, with advanced routing protocols. Includes dual power supplies, hot-swappable modules, link aggregation (LAG), and support for HSRP/VRRP. Modular chassis or stackable designs make it easy to scale as your network grows. A core switch in networking serves as the high-capacity backbone, centralizing data flow and ensuring efficient communication between different network segments. This model divides the network into three functional layers: the Access Layer, the Distribution Layer, and the Core Layer. Sitting at the top of the hierarchical model, core switches interconnect distribution layer switches and provide high-speed data transfer across. To fully understand its role, it's important to first distinguish it from other layers—especially in this guide on Core vs Aggregation vs Access Switches, which explains how each layer functions within a hierarchical network design.

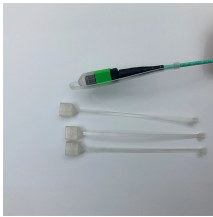
## Core Switch of the Information Intranet



Powerful new modular smart switches for the core of the network, purpose-built to power, secure, and simplify the network for AI.



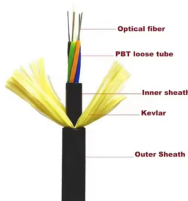
The core switch functions as the central point of the entire network, forming the high-speed backbone for the organization's data infrastructure. Its primary purpose is to provide an ...



While edge switches handle user connectivity and routers manage external internet traffic, the core switch acts as the central nervous system bridging your entire local environment.



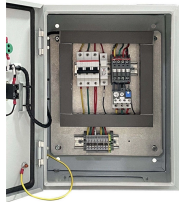
Explore the core switch's role as the backbone of your network. Discover key differences, uses, and insights into layer 3 core switch technology.



A core switch is the primary switch installed at the backbone of a layered or hierarchical network. These data switches are responsible for routing and data switching at the core layer of the network.



At the heart of this activity lies the core switch, a critical component responsible for facilitating high-speed data transmission and maintaining the overall stability and performance of the ...



When it comes to the core FortiGate devices, the choice depends on the type of traffic and if there is a requirement to handle all requests on the campus to be secured and filtered at the core level or if ...



What Is Core Switch? A core switch is not a certain kind of network switch. It refers to the data switch that is positioned at the backbone or physical core of a network. ...



Sitting at the top of the hierarchical model, core switches interconnect distribution layer switches and provide high-speed data transfer across network segments. Unlike access or distribution switches, a ...



What Is Core Switch? A core switch is not a certain kind of network switch. It refers to the data switch that is positioned at the backbone or physical core of a network. Therefore, it must be a high-capacity ...



What is a Core Switch? It is a powerful backbone switch in the center of the network core layer, which centralizes multiple aggregation switches to the core and implements LAN routing. The ...

## Contact Us

For more information, pricing, or custom data center solutions, please contact us:

Website: <https://www.yoahorroenergia.es>

Email: [hello@yoahorroenergia.es](mailto:hello@yoahorroenergia.es)

Phone: +233 54 318 7269

Address: Plot 28, Spintex Road, Accra, Greater Accra, Ghana

This document is for informational purposes only. Specifications subject to change without notice.

