

Core Switch Selection Solution



Overview

In terms of models, Cisco's Catalyst 9600 series and Nexus 9000 series and Huawei's CloudEngine 16800 and S12700 series are excellent core switch products suitable for deployment in medium- to large-sized enterprises, capable of delivering high performance, reliability, and. In terms of models, Cisco's Catalyst 9600 series and Nexus 9000 series and Huawei's CloudEngine 16800 and S12700 series are excellent core switch products suitable for deployment in medium- to large-sized enterprises, capable of delivering high performance, reliability, and. Empower your hybrid workforce with intelligent, connected spaces and network insights. Quickly identify the right Cisco switch for your needs, whether you're looking for a new switch or upgrading an old one for an enterprise LAN, a data center, outdoors, or industrial operations. Just answer a few. In the realm of system networking, three key types of switches are frequently mentioned: access switches, aggregation switches, and core switches. The layer that lies between the access layer and the. What exactly is a core switch?

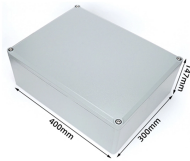
To use an analogy, it's like a city traffic command center, where the

company's data traffic is diverted and forwarded. WeChat messages can be reached in seconds, surveillance videos are not stuck, and the ERP system is as stable as a dog, all of which depends on its. Describes how to deploy campus network connectivity based on the gateway locations and AC attributes (native AC, standalone AC, or ACU2).

Core Switch Selection Solution



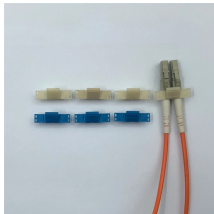
By taking these considerations into account, you can make an informed decision when selecting a core switch that aligns with your network's demands and future growth.



This article provides an in-depth guide to core switch selection, recommending models like the Huawei S6730 Series for businesses of varying sizes (50/500 employees).



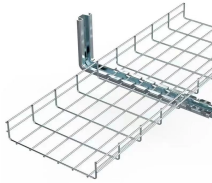
This solution guide focuses on the topics that are considered key to a successful implementation rather than provide a complete description of every switch feature.



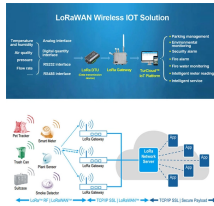
Choosing the right core switch can ensure that the enterprise network carries out fast and effective operation status. So, what cost-effective brands and models should we choose when ...



As the network is a newly deployed midsize network, select the solution of Native AC Solution: Core Switches Function as the Gateway for Wired and Wireless Users.



Learn how core switches for enterprise networks and LAN campus networks function in the hierarchical internetworking model and how to choose the right core switch for enterprise networks.



Therefore, I was debating on a pair of either of the aforementioned switch with a 24-48 port SFP+ configuration, a pair of cat9300 stacks for my 1gb copper requirements in the MDF. So, my question - ...



People have known to directly connect PCs (because they were "servers", in a sense) to "core switch" because they could not be bothered (or could not afford) to put an aggregate switch.



Quickly identify the right Cisco switch for your needs, whether you're looking for a new switch or upgrading an old one for an enterprise LAN, a data center, outdoors, or industrial operations.



My experience with Cisco equipment, their chassis switches and/or higher end Enterprise switches seem to be more stable and/or offer more internal hardware resources than their stackable ...

Contact Us

For more information, pricing, or custom data center solutions, please contact us:

Website: <https://www.yoahorroenergia.es>

Email: hello@yoahorroenergia.es

Phone: +233 54 318 7269

Address: Plot 28, Spintex Road, Accra, Greater Accra, Ghana

This document is for informational purposes only. Specifications subject to change without notice.

