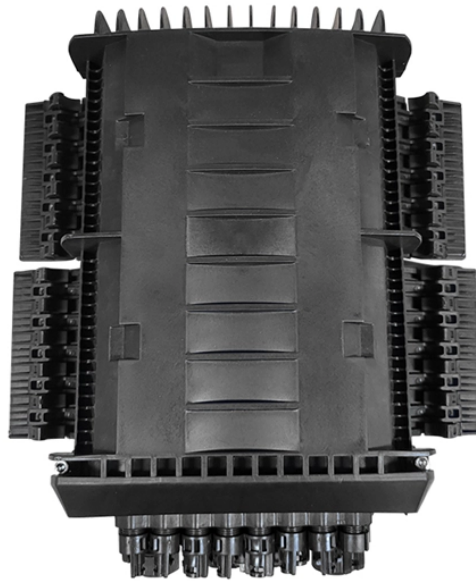


# Core Switch Qualification Requirements Standards



## Overview

This document specifies requirements towards Ethernet Switch Semiconductors. These requirements cover the following areas: general function, address resolution, virtual LANs, Quality of Service, filtering, diagnostics, interfacing, configuration, and time. Q-LAN relies on the performance of modern network switches to ensure real-time delivery and synchronicity of media streams across all connected Q-SYS devices. Read this topic to understand your options in choosing a network switch, as well as the requirements for compatibility with Q-LAN. Description First release. Specifications Requirement Data Center Core Switch Replacement Introduction The United Nations University (UNU) is an international community of scholars engaged in research, postgraduate training and dissemination of knowledge in furtherance of the purposes and principles of the United Nations. tual chassis feature & should support m LAN (Q-in-Q), Port-based VLAN ased VLAN, Private VLAN, Multicast VLAN (ISM VLAN for Host-based access control, Identity-driven Policy Assignment, Dynamic VLAN 4/IPv6 I-based VLAN or 802. 1Q, Doubl (Q-in-Q), Private VLAN, Multicast VLAN (ISM VLAN for I. With the Fortinet solution for integrated networking using FortiLink,

the core layer always comprises a set of two to four FortiGate devices and two very high-speed FortiSwitch units, which support a large number of 100-GbE and/or 40-GbE ports with enough capacity to grow the links between them and. This white paper introduces the following three types of network switches and further discusses the selection criteria for each switch. These networks are designed with three tiers that facilitate strategic.

## Core Switch Qualification Requirements Standards



You should ask your supplier or in-house support team to ensure that switches are configured to support network segregation, security and quality of service. This should not impact the network's ...



These are the required and recommended network switch performance characteristics for satisfactory operation with Q-LAN traffic. Must have non-blocking wire-speed Gigabit Ethernet and no dropped ...



The document outlines specifications for a layer 3 core switch, including that it should support: - At least 800Gbps switching capacity and 250Mbps throughput for IPv4 and 125Mbps for IPv6 - Hardware ...



This document specifies requirements towards Ethernet Switch Semiconductors. These requirements cover the following areas: general function, address resolution, virtual LANs, Quality of Service, ...



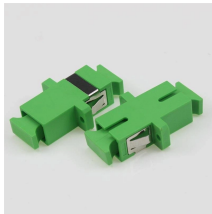
Specifications for Data Center Core Switch Replacement, including hardware, service, and functionality requirements. Cisco network equipment, installation, testing.



All members of the project delivery team must be OEM certified engineers and possess relevant industry certifications such as Fortinet NSE (Network Security Expert). They must have experience working ...



Core switches are defined as high-capacity switches located at the top of a cloud data center network, connecting aggregation switches and providing interfaces to wide area networks (WANs).



ifications Document For IT Equipments Core Switch Specification S No Generic Requirements Interface and p. nce Requirements 1.1 Proposed Switch should have minimum 16 x 10G SFP+ ports ...



Owing to the importance of core switches, the quality and performance of the core network switches must be tested. To ensure that the switches can perform tasks of the core layer or collapsed core ...



With the use of a core layer, each aggregation switch only needs 2x100-GbE links, and the core layer is the only place where you need large numbers of 100-GbE ports.

## Contact Us

For more information, pricing, or custom data center solutions, please contact us:

Website: <https://www.yoahorroenergia.es>

Email: [hello@yoahorroenergia.es](mailto:hello@yoahorroenergia.es)

Phone: +233 54 318 7269

Address: Plot 28, Spintex Road, Accra, Greater Accra, Ghana

This document is for informational purposes only. Specifications subject to change without notice.

