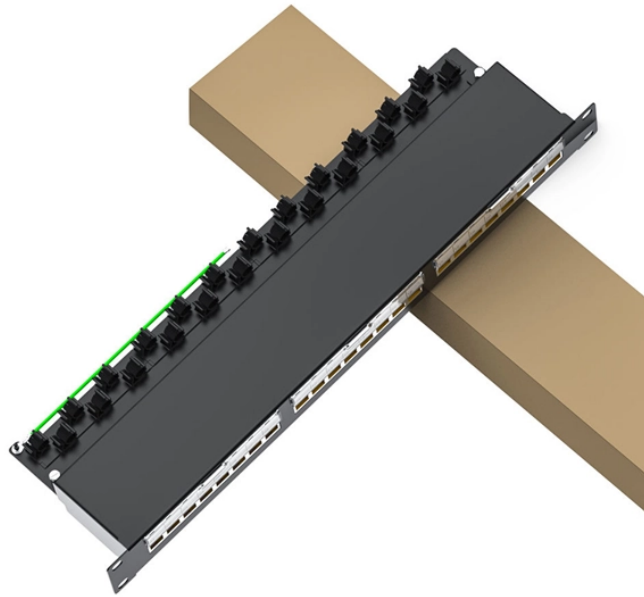


Core Switch IP Planning



Overview

This document provides best practices and guidelines when deploying a Campus LAN with Meraki which covers both Wireless and Wired LAN. Planning is key for a successful deployment and aims in collecting/validating the required design aspects for a given solution. I will be replacing a Cisco 3750x with a Nexus 3127 and would like some advice about how to go about the actual migration with the least downtime. Layer 2 loops cause catastrophic network disruptions, making prevention and. This is a critical factor to consider with the introduction of more and more wired and wireless devices connected to the networks, the newest WiFi 6E (802. When configuring interfaces and routes, you. EXTENSIBILITY SHOULD INCLUDE TWO ASPECTS 1.

Core Switch IP Planning



We will be swapping our existing core switch for a new one and I want to get some verification that the procedure I have in mind is a good one to take. We currently have the following ...



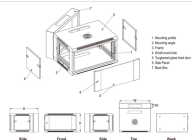
This lab simulates a real-world enterprise network upgrade involving the replacement and configuration of core switches, port migration, ACL deployment, and rollback planning.



Core switches are configured as BSR candidates using a unique loopback IP address and as RP candidates using the shared anycast IP loopback. After a single switch is elected as the ...



As this is a replacement upgrade, both switches which are core switches will have the same IP addresses configured on them. So far I have two options that come to mind and would like ...



In this scenario, IP addresses of the interfaces connecting the core switch to the BRASs and firewalls and OSPF need to be configured on the core switch, so as to implement connectivity ...



CORE has announced a new wholesale power supply partnership with Invenergy that will provide us more than 1.2 terawatt-hours of renewable energy per year starting in 2026.



Planning is key for a successful deployment and aims in collecting/validating the required design aspects for a given solution. The following section takes you through the whole design and planning process ...



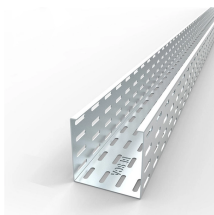
The most important purpose of the layer 3 switch is to speed up the data exchange within the large LAN, and the routing function is also for this purpose. It can do one route and multiple forwarding.



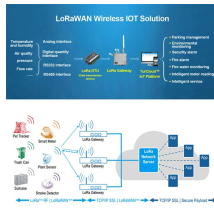
The core of a nuclear reactor (= a device in which atoms are changed to produce energy) is the place where fission (= the dividing of atoms) happens.



When you build a multi-tiered network, you need to consider the bandwidth oversubscription ratios for every layer of the switching hierarchy. The upstream bandwidth at each layer must provide enough ...



Core can be a noun, verb, or adjective, but is most often used as a noun to refer to the central or most important part of something ("the core of the issue," "the Earth's core") or to the usually inedible ...



The core of something such as a problem or an issue is the part of it that has to be understood or accepted before the whole thing can be understood or dealt with.



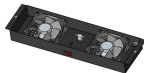
Core makes it possible by giving beginners and pros alike the power of Unreal in an accessible interface. You have access to hundreds of free, high-quality music, sound and art assets, and built-in 3D ...



Migrate the user connections to the new switch (here user will get new subnet) - hope this is acceptable or you looking same old IP address? Note: Start making a small Network Digram ...



Deeply rooted in nature and guided by a mission to bring people together through the finest alternative house & techno music, CORE is bringing the mythical and beautifully crafted stage to all corners of ...



Discover what a core switch does in a 3-tier network model. Learn about ASIC routing, collapsed core vs dedicated core topologies, and SMB sizing guides.

Contact Us

For more information, pricing, or custom data center solutions, please contact us:

Website: <https://www.yoahorroenergia.es>

Email: hello@yoahorroenergia.es

Phone: +233 54 318 7269

Address: Plot 28, Spintex Road, Accra, Greater Accra, Ghana

This document is for informational purposes only. Specifications subject to change without notice.

