

Construction site yellow electrical distribution box color code



Overview

Electric Utility (Red) – Marks buried electrical cables and power infrastructure. Keeping track of what's exactly buried underground on a worksite can be a challenge, which is why utility locators follow the uniform color codes mandated by the American Public Works Association (APWA) for temporarily marking their facilities. The American Standards Institute (ANSI) established. The “Xcel Energy Standard for Electric Installation and Use” contains the requirements and uniform standards necessary to achieve this policy. Uniform enforcement of these standards throughout the Company will expedite service connections and treat each of our customers equally and fairly. If the conduit size is not given on the drawings, the conduit shall be sized in accordance with NEC based on the number of conductors enclosed plus a parity-sized. Provide labels, nameplates, panel directories and color-coding as specified herein and according to attached electrical identification drawings. Surface marks on roadways do not exceed 1. 5" y 18" (40 mm by 450 mm). The facility color and facility owner identity may be added of service buried lines.

Construction site yellow electrical distribution box color code



Keeping track of what's exactly buried underground on a worksite can be a challenge, which is why utility locators follow the uniform color codes mandated by the American Public Works ...



The utility companies follow these guidelines and mark the site using a sequence of color codes including White, Pink, Blue, Green, Yellow, Orange, Red, and Purple shades to identify respective ...



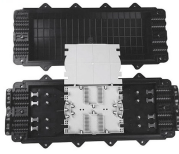
Provide labels, nameplates, panel directories and color-coding as specified herein and according to attached electrical identification drawings.



This document provides a color-coding guide for identifying different pipes, cable trays, trunking, conduits, and ducting for M& E (mechanical and electrical) services.



To avoid confusion, the American Public Works Association (APWA) developed a Uniform Color Code used nationwide for utility markings. This standardized color system means that each color ...



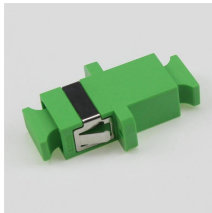
The American Public Works Association (APWA) recommends the following guidelines be used when marking underground utilities. Utility paint color chart.



4.1.1 The following color coding shall be represented on all feeders, branch circuits, and distribution conductors and shall include the correct phase type and identification throughout the ...



The American Public Works Association encourages public agencies, utilities, contractors, other associations, manufacturers and all others involved in excavation to adopt the APWA Uniform Color ...



The "Xcel Energy Standard for Electric Installation and Use" is a valuable timesaving publication that will help to determine the necessary requirements for customers' wiring intended to be connected to the ...



The American Public Works Association (APWA) has developed a standardized color code system to facilitate this process, used for both above markings and underground warning tape. ...

Contact Us

For more information, pricing, or custom data center solutions, please contact us:

Website: <https://www.yoahorroenergia.es>

Email: hello@yoahorroenergia.es

Phone: +233 54 318 7269

Address: Plot 28, Spintex Road, Accra, Greater Accra, Ghana

This document is for informational purposes only. Specifications subject to change without notice.

