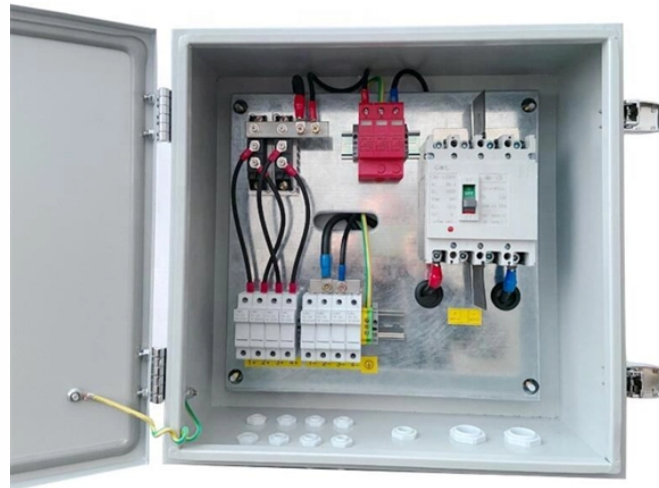


# Construction of cable trays of various specifications



## Overview

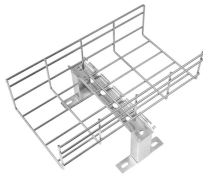
Explore various cable tray types and sizes for electrical installations. Learn about ladder, perforated, solid-bottom, wire mesh, and channel trays in this complete guide. Wire. B manufactures its cable tray in a range of materials with a variety of finishes. The selection of material and finish is a function of the environment in which it is used in a wide range of environments, and easily formable (Appendices II and III). All illustrations, descriptions and technical information included in this document are provided as indications and can cable trays are equivalent. The mechanical and electrical characteristics, tests, certifications, overall quality management, recommendations mentioned. The work covered under this section consists of the furnishing of all necessary labor, supervision, materials, equipment, tests and services to install complete cable tray systems as shown on the drawings. Cable tray systems are defined to include, but are not limited to straight sections of. The Cable Tray Institute (CTI) was founded in 1991 to support the cable tray industry by engaging in research, development, education, and the dissemination of information designed to promote, enhance, and increase the visibility of the industry. 104 klipp, a professional corporation 100%

Construction Documents SECTION 260536 - CABLE TRAYS FOR ELECTRICAL SYSTEMS PART 1 - GENERAL 1.

## Construction of cable trays of various specifications



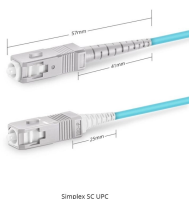
Show fabrication and installation details of cable tray, including plans, elevations, and sections of components and attachments to other construction elements.



The Cable Tray Institute has several standards and guidelines for the construction, testing, performance, and installation of cable tray. More information can be found here: ...



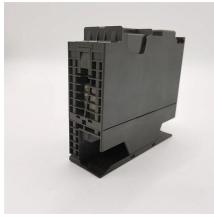
The work covered under this section consists of the furnishing of all necessary labor, supervision, materials, equipment, tests and services to install complete cable tray systems as shown on the ...



This chapter deals with the correct dimensioning and the final selection of a cable support system, depending on the application, according to various influencing factors, such as cable volume, cable ...



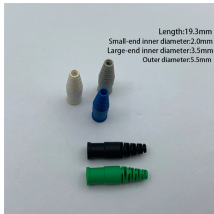
Hubbell's NEXTFRAME® Ladder Tray is the effective and widely used cable runway that supports and delivers bundles of cable between cabinets, racks, and closets, along walls, and suspended from ...



Cable tray length is selected based on the load to be supported, the distance between the supports (also referred to as the span), and handling and installation constraints.



Explore various cable tray types and sizes for electrical installations. Learn about ladder, perforated, solid-bottom, wire mesh, and channel trays in this complete guide.



When fitting cable trays and their accessories, the products are cut on site to create changes of direction, adjust sections, etc. Damage can also occur during handling; as a result, both the ...



Specification section for cable trays in electrical systems, covering ladder, trough, and fiberglass types. Includes standards, materials, and installation.



The document outlines codes and standards that must be followed for design and construction of cable trays and their components. Standards listed include those for materials, rolling and cutting ...



This document provides specifications for cable tray systems. It outlines the different styles of cable trays including ladder, ventilated, solid bottom, and channel.

## Contact Us

For more information, pricing, or custom data center solutions, please contact us:

Website: <https://www.yoahorroenergia.es>

Email: [hello@yoahorroenergia.es](mailto:hello@yoahorroenergia.es)

Phone: +233 54 318 7269

Address: Plot 28, Spintex Road, Accra, Greater Accra, Ghana

This document is for informational purposes only. Specifications subject to change without notice.

