

# Construction Requirements for Cable Trays in Fire Pump Rooms



## Overview

Complete NEC Article 728 (2017) checklist for fire-resistive cable systems: scope, listing, installation (mounting, supports, raceways, trays, boxes, lubricants, vertical supports, splices), grounding, marking, with AHJ tips, documentation, and common violations. Ventilation Requirements Proper ventilation is essential to: Ventilation systems must be designed so they do not reduce pump performance or compromise the fire rating of the room. For diesel fire pumps, NFPA 20 requires: Electric fire pumps must comply with NFPA 20 and NFPA 70 (NEC) requirements. A fire pump room (also referred to as a pump shed or enclosure) is a dedicated space that houses fire pumps and related equipment used to deliver water to fire protection systems. This area must be designed per NFPA 20 standards and local authority requirements (AHJ) to ensure safety. D. tray shall be grounded per NEC. END OF SECTION the cable tray, fittings, and adaptors. Below is the detailed cable tray installation method statement not only for cable tray but also applicable for GI ladder and trunking for indoor and outdoor applications and in service rooms like pump rooms, electrical rooms and plant rooms etc. Where cables pass through shafts, walls, slabs, or enter electrical panels or cabinets, openings

shall be tightly sealed with firestopping materials in accordance with. Looking at installing a cable tray that runs the length of the room in an Ordinary Hazard Occupancy.

## Construction Requirements for Cable Trays in Fire Pump Rooms



END OF SECTION the cable tray, fittings, and adaptors.



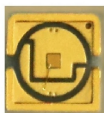
A generic guideline developed by the Cable Tray Institute indicates that cable trays should not be filled in excess of 40-50% of the inside area of the tray or of the tray's maximum weight based on the cable ...



Learn fire pump room requirements as per NFPA standards. A complete guide covering location, fire rating, ventilation, drainage, electrical and diesel fire pump compliance.



These help initiate pump operation based on system pressure changes. Show cable trays and wiring paths from pumps to controllers. Emergency lighting must not be tied to engine start ...



Below is the detailed cable tray installation method statement not only for cable tray but also applicable for GI ladder and trunking for indoor and outdoor applications and in service rooms like pump rooms, ...



Technical guide to firestopping cable tray and slab penetrations in electrical shafts; specifies materials, packing limits, waterstop heights and installation sequence.



Manufacturer's listing and installation instructions for the entire fire-resistant cable system, including supports, raceways, boxes, splices, and approved lubricants.



This guide for engineers and installers has been developed by ABB as a practical reference regarding cable tray characteristics, installation, and requirements.



Looking at installing a cable tray that runs the length of the room in an Ordinary Hazard Occupancy. The cable tray is about 2-feet wide and the sprinklers are standard uprights. The cable tray is less than 18 ...



Specifies requirements for metal cable trays and associated fittings designed for use in accordance with the rules of Canadian Electrical Code, Part I and the National Electrical Code®

## Contact Us

For more information, pricing, or custom data center solutions, please contact us:

Website: <https://www.yoahorroenergia.es>

Email: [hello@yoahorroenergia.es](mailto:hello@yoahorroenergia.es)

Phone: +233 54 318 7269

Address: Plot 28, Spintex Road, Accra, Greater Accra, Ghana

This document is for informational purposes only. Specifications subject to change without notice.

