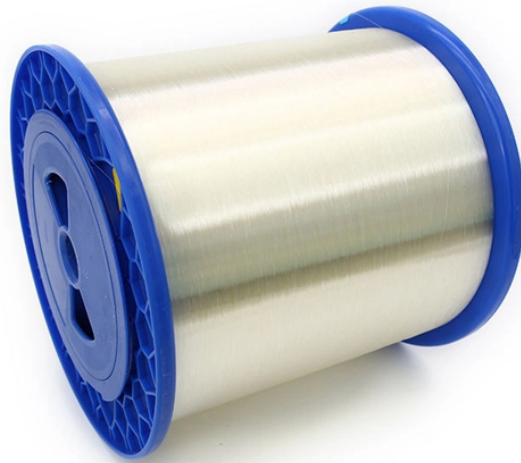


Connection of distribution box circuit and ground wire



Connection of distribution box circuit and ground wire



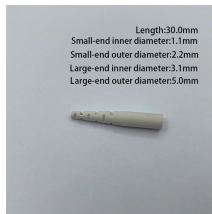
Generally, copper core wire is selected as the ground wire and connected to the PE wiring bar. When connecting, it is necessary to strip the wire for a distance, then connect it to the ...



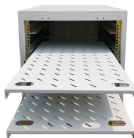
Neutral wires connect to the neutral bus bar completing the electrical circuit. Ground wires are attached to the ground bus bar which connects to the ground rod & water pipe for safety ...



Correct wiring methods for circuit breakers within distribution boxes are fundamental to ensuring electrical safety and compliance with established codes. ...



Master the fundamental safety difference between neutral and ground wires and the strict rules governing where they must connect or separate.



This guide will walk you through the process of grounding your circuit breaker box, covering everything from identifying the components to the final connection.



Find out how to properly wire an electrical panel box with a comprehensive diagram and step-by-step instructions.



Generally, copper core wire is selected as the ground wire and connected to the PE wiring bar. When connecting, it is necessary to strip the wire ...



This is a simple 120v electric box wiring diagram, and wiring project that is fairly inexpensive and can be done by anyone with some electrical wiring knowledge.



How to make proper & safe electrical ground wiring connections in the box: This article describes options for connecting a metal electrical box to the grounding conductor & connecting the ...



Correct wiring methods for circuit breakers within distribution boxes are fundamental to ensuring electrical safety and compliance with established codes. The distinction between 1P and 2P ...



This page contains wiring diagrams for a service panel breaker box and circuit breakers including: 15amp, 20amp, 30amp, and 50amp as well as a GFCI breaker and an isolated ground circuit.



Check your electrical panel for proper wire connections, ensuring white neutral wires and green ground wires connect to separate bus bars to prevent short circuits and maintain safety.

Contact Us

For more information, pricing, or custom data center solutions, please contact us:

Website: <https://www.yoahorroenergia.es>

Email: hello@yoahorroenergia.es

Phone: +233 54 318 7269

Address: Plot 28, Spintex Road, Accra, Greater Accra, Ghana

This document is for informational purposes only. Specifications subject to change without notice.

