

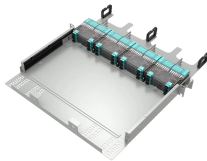
## Connecting Huawei switch to fiber optic cable



### Overview

A hybrid optical-electrical switch can be directly connected using a pigtail, connected to an HDF, or connected through a hybrid cable terminal box. Assemble and test a hybrid cable 2. Before connecting a hybrid cable to the device, separate two power cables (with a 7 mm. DANGER ● To avoid electric shock, do not connect or remove power cables while the power is on. NOTE ● Attach labels to the power switches that will be used during the operation. The objective is to run 1 or 2 additional optic fibre from the. Step 1: Gather the Necessary Equipment To connect your fiber optic cable to a router, ensure you have the following: Fiber optic modem (ONT): Most fiber connections require an Optical Network Terminal (ONT), provided by your ISP.

## Connecting Huawei switch to fiber optic cable



The objective is to run 1 or 2 additional optic fibre from the main switch down to the shed in the back of my garden and down to the garage as well. Here''s a quick sketch to present the layout ...



After hybrid cables 2.0 are made onsite, you are advised to use a red pointer and an optical fiber adapter to check whether optical fibers are broken or not. When routing a hybrid cable 2.0, coil the excess ...



To connect optical fibers to an optical module, align the fiber connector with the bores on the optical module and insert the fiber connector. When you hear a click, the optical fiber is securely connected.



However, setting up a fiber optic connection to your router can seem daunting if you're unfamiliar with the process. In this guide, we'll walk you through how to connect a fiber optic...



To connect a fiber, align the optical connector with the optical port and gently insert the optical fiber into the port. To remove a fiber, press the clip on the connector and pull the fiber out.



Turn the support to find the correct optical fiber installation slot and push the support forward (together with the rubber ring) until the optical fiber is installed to the correct position.



To connect them, align the fiber connector with the bores on the optical module and insert the fiber connector. When you hear a click, the fiber connector is securely connected. See Figure 9-3. After ...



Connect the jumper to the corresponding ports on the HDF and hybrid optical-electrical switch. Connect the main cable with the pigtail spliced to the corresponding port at the rear of the HDF.



Insert the phoenix connector into the DC power port on the device, and connect the fiber connector to the optical module. Route the cable according to the cabling requirements in *Assembling a Hybrid ...*

## Contact Us

For more information, pricing, or custom data center solutions, please contact us:

Website: <https://www.yoahorroenergia.es>

Email: [hello@yoahorroenergia.es](mailto:hello@yoahorroenergia.es)

Phone: +233 54 318 7269

Address: Plot 28, Spintex Road, Accra, Greater Accra, Ghana

This document is for informational purposes only. Specifications subject to change without notice.

