

Confirmation of ODU Engineering Quantity for Fiber Optic Distribution Unit



Overview

Short fiber optic premises cabling networks are generally tested in three ways, connector inspection/cleaning with a microscope, insertion loss testing with a light source and power meter or optical loss test set, and polarity data, meaning that the routing of fibers is. Short fiber optic premises cabling networks are generally tested in three ways, connector inspection/cleaning with a microscope, insertion loss testing with a light source and power meter or optical loss test set, and polarity data, meaning that the routing of fibers is. Speed is the defining characteristic of this system: Fiber Optic is the optimal connection technology whenever the highest data rates and fast, interference-free transmissions are required. We deliver quality and stability - our high-performance optical technologies can serve a wide and demanding. lication in combination with the suitable cabl Physical Contact t (in mated con (in mated con The integrated Optical Distribution Unit (iODU) receives downlink RF signals from the integrated BTS Interface Unit (iBIU), converts the RF signals to optical, then sends the signal to the remote optic units (ROUs) or

to the Optic Expansion Unit (OEU or iOEU) via fiber optic cabling. This process. Fiber optic network design refers to the specialized processes leading to a successful installation and operation of a fiber optic network. Each cassette contains up to either 24 SC or. F2H-ODU-P3 Series drawer type fiber optic panel is used as terminal equipment of fiber optic cable for optical fiber wiring, fixation, fusion and patching. Both the bottom and the tray can be pulled out by two guide.

Confirmation of ODU Engineering Quantity for Fiber Optic Distributi



Yes, ODU tests all fiber optic assemblies before shipping them to customers. Using the individual serial number of your assembly, you can access the test reports for your product at any time and verify the ...



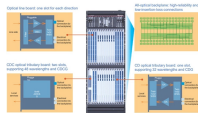
We recommend you review the FOA Guide sections on fiber optic installation ...



F2H-ODU-P3 Series drawer type fiber optic panel is used as terminal equipment of fiber optic cable for optical fiber wiring, fixation, fusion and patching. 1.The fiber ...



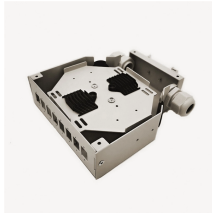
F2H-ODU-P3 Series drawer type fiber optic panel is used as terminal equipment of fiber optic cable for optical fiber wiring, fixation, fusion and patching. 1.The fiber optic panel consists of three main parts: ...



We recommend you review the FOA Guide sections on fiber optic installation covering basic fiber installation and OSP fiber installation. Designing a network requires working with other personnel ...



There are so many variables in making an insertion loss test of multimode fiber that they fill a giant table in the FOA page on "metrology" or the science of fiber optic measurements.



This module provides flexibility and functionality within a single frame without sacrificing space. Each cassette contains up to either 24 SC or 36 LC connector adapters.



Distribution cable and drop cable is connected in between the optical fiber distribution unit (FDU), which is an important part of the whole optical distribution network (ODN).



The cable connections of four height units can be guided over two numbered, lettered and colour-coded cable routing mandrels of the same colour and number. In many cases, the ODF racks will be ...



This document contains a bill of quantities (BOQ) for two fiber optic cabling projects. For the first project of supplying and installing a 12 core fiber cable, the materials will cost RM5,277 and the services ...



ODU FIBER OPTIC ...technologies offer you high data rates, interference-free transmissions and exactly the quality and stability that is needed for an optical connection. ODU provides a basic portfolio of ...



The integrated Optical Distribution Unit (iODU) receives downlink RF signals from the integrated BTS Interface Unit (iBIU), converts the RF signals to optical, then sends the signal to the remote optic ...

Contact Us

For more information, pricing, or custom data center solutions, please contact us:

Website: <https://www.yoahorroenergia.es>

Email: hello@yoahorroenergia.es

Phone: +233 54 318 7269

Address: Plot 28, Spintex Road, Accra, Greater Accra, Ghana

This document is for informational purposes only. Specifications subject to change without notice.

