

Configuring H3C Switch Fiber Port Full-Duplex

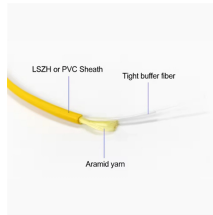


Overview

Configure the cascade port Enter the command Step 1: interface GigabitEthernet 1/0/21 into the port Step 2: speed 1000 set the speed to 1000M The third step: duplex full set the port to full duplex mode The fourth step: flow-control open flow control, the. Configure the cascade port Enter the command Step 1: interface GigabitEthernet 1/0/21 into the port Step 2: speed 1000 set the speed to 1000M The third step: duplex full set the port to full duplex mode The fourth step: flow-control open flow control, the. On a Layer 3 Ethernet interface, you can create multiple Layer 3 subinterfaces. This chapter describes how to configure management Ethernet interfaces and Ethernet interfaces. com Software version: S12500-CMW710-R7128 Document version: 6W710-20121130. Page 2 SecPro, SecPoint, SecEngine, SecPath, Comware, Secware, Storware, NQA, VVG, V G, V G, PSPT. This video provides a comprehensive guide on configuring and troubleshooting Combo ports on H3C Ethernet switches. For engineers who service ToR and spine switches, the process blends precision, patience, and a knack for reading datasheets. All contents in this document, including statements, information, and recommendations, are believed to be accurate, but they are presented

without warranty of any kind, express or implied. H3C shall not be liable for technical software features. In H3C network devices, a combo port (optical-copper multiplexing port) is a multifunctional interface that integrates two physical media: optical fiber and copper cable.

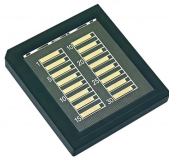
Configuring H3C Switch Fiber Port Full-Duplex



The demonstration illustrates how to configure Combo ports for various scenarios, including automatic detection and manual configuration for specific software versions, as well as adjusting port speed ...



Users must pass 802.1X authentication to access the Internet. They use the H3C iNode client to initiate 802.1X authentication. Switch A uses a RADIUS server (Switch B) to perform ...



In the interface view, you can activate the fiber or copper combo port, and configure other port attributes such as the interface rate and duplex mode. For more information about the number of combo ...



- To avoid packet loss, set the duplex mode to full duplex.
- To avoid data congestion, configure the interfaces to operate at 100 Mbps. # Add GigabitEthernet 1/0/1 through GigabitEthernet 1/0/3 to ...



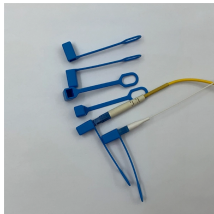
Page 3 The H3C S12500 documentation set includes 13 configuration guides, which describe the software features for the H3C S12500 Series Routing Switches and guide you through the software ...



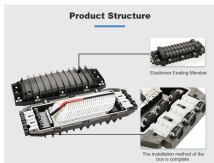
A practical technical guide on configuring fiber modules for hot-pluggable transceivers, with real-world deployment tips, specs, and troubleshooting for data center networks.



In H3C network devices, a combo port (optical-copper multiplexing port) is a multifunctional interface that integrates two physical media: optical fiber and copper cable.



Preface software features available on the Web interface. It guides you through the feature configuration procedures and provides configuration examples to help you apply the des the f lowing topic about ...



- By default, the duplex mode is auto for a copper port and full for a fiber port. The duplex command cannot modify the duplex mode to any value other than the default for the copper port or fiber port.



Note: In order for the packets of VLAN 10 and VLAN 20 on the new switch to be sent to the old switch, configure the link type from GigabitEthernet 1/0/21 to GigabitEthernet 1/0/24 to Trunk, ...

Contact Us

For more information, pricing, or custom data center solutions, please contact us:

Website: <https://www.yoahorroenergia.es>

Email: hello@yoahorroenergia.es

Phone: +233 54 318 7269

Address: Plot 28, Spintex Road, Accra, Greater Accra, Ghana

This document is for informational purposes only. Specifications subject to change without notice.

