

## Configure AP on Core Switch



### Overview

Configure the core switch as the gateway and tap Create Service Network. WLAN Controller 4400 series connected to Catalyst 4506 on vlan 12. what config is needed on ports were Access points are connected. cheers Samuel 07-15-2012 07:32 AM You specified vlan 5 then vlan 4 on. Confirm. The SSID of the management Wi-Fi network is in the format of hw\_manage\_xxxx, hw\_manage\_fit\_xxxx, or hw\_manage\_cloud\_xxxx, where xxxx indicates the last. Network planning 1: The AR router accesses the Internet through DHCP or PPPoE on the WAN interface or the static IP address allocated by the carrier. Once APs have established communication with the managed device, apply advanced configuration to individual APs or groups of APs in the network using the WebUI on the managed device. You can. Use Cisco Feature Navigator to find information about platform support and Cisco software image support. Each layer serves a specific purpose, with devices designed specifically for that function. Access layer switches support end users and devices, things like: Connecting AP's to your core can introduce unnecessary traffic, and lead to performance and.

## Configure AP on Core Switch



Provides an overview of the various methods to configure installed APs in your network. Includes information on configuring a campus AP or a remote AP, and verifying the status of the configured AP.



The state of the access point is not maintained on the switch until it receives a CAPWAP join request from the access point, so it can be difficult to determine why the CAPWAP discovery request from a ...



Long story short. currently, APs are getting IP from the core switch where the DHCP server is created. I have noticed that when the APs restart the IP address is changing on them. I ...



Switches should be able to achieve wire-speed switching, which is the rate at which data is transferred on a transmission line, to minimize switching bottlenecks.



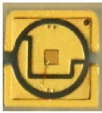
Make sure the core switch is the root bridge, and enable portfast and BPDU guard on all access interfaces. Do your routing on the core switch, with an L3 transit to the firewall.



Make sure vlan 6 is configured on the access switch and being allowed on the trunk to the core. You wireless traffic gets tunneled back to the wlc and that would be a trunk port only allowing ...



I guess it's along the lines of a GS105 switch and a EX6100 Wifi Extender in AP mode - as the guys above have said there should be no issue with this working in that setup.



# Configure the interfaces for interconnection between the core switch and access switches as planned. Here, the interface for interconnection between the core switch and access switch 1 is used as an ...



Can you plug an access point into your core switch? Technically yes ... but should you? Most networks are designed using 2 or 3 layers.



With the wizard-based network configuration function, the interconnection subnet, interconnection VLAN, and route between the core switch and the gateway are automatically configured, greatly improving ...

## Contact Us

For more information, pricing, or custom data center solutions, please contact us:

Website: <https://www.yoahorroenergia.es>

Email: [hello@yoahorroenergia.es](mailto:hello@yoahorroenergia.es)

Phone: +233 54 318 7269

Address: Plot 28, Spintex Road, Accra, Greater Accra, Ghana

This document is for informational purposes only. Specifications subject to change without notice.

