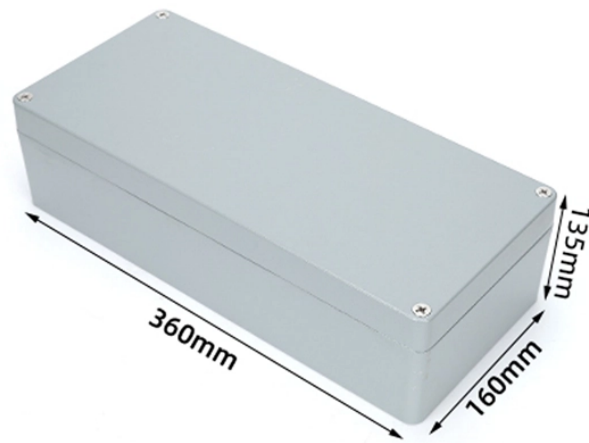







Cold Shrink Cable Junction Box



Cold Shrink Cable Junction Box

 <p>The diagram, titled 'INSTALLATION METHOD', illustrates the process of connecting a CSJD to different cable types. It shows the removal of the outer jacket and the application of the cold shrink sleeve to the tape shield, LC shield, JCN, and flat-strap shielded cable. The final step shows the CSJD being connected to standard 'I', 'Y', and 'H' insulated cable buses.</p>	<p>Designed for 1 core shielded power cable (15 - 28 kV) applications, the CSJD connects tape shield, LC shield, JCN and flat-strap shielded cable to standard "I", "Y" and "H" insulated cable buses.</p>
	<p>3M electrical splices feature cold shrink technology, which is engineered for easy installation by unwinding the inner core. Reduce the time, labor and cost that comes with electrical cable splicing. ...</p>
	<p>That's why we invented Cold Shrink technology: a revolutionary alternative to traditional heat shrink cable joints and terminations that can be installed in a fraction of the time, without the need for ...</p>
	<p>Excellent performance: The cold shrink terminations and cable joints are made of high-quality silicone rubber material. It not only has excellent hydrophobic performance but also does not form conductive ...</p>
	<p>Cold shrink cable terminations provide a quick, easy, safe and cost effective installation. No installation tools required, spiral rip cord design unwinds easily and enables quick removal of the hold-out core.</p>



Eaton Cooper Power series EZ II Splice, Single piece cold shrink re-jacketing kit, 15 kV, AC 1 min: 35 kV, DC 15 min: 70 kV, BIL: 110 kV, Cable insul: 0.64-0.91 inch, Strand A: 1/0 AWG, Solid A: 2/0 AWG, Al ...



The ColdFit™ outdoor PCT (with sheds) and indoor PICT (without sheds) are medium-voltage cold-shrink polymer terminations designed for fast, easy, and reliable installation.



WOER offers premium cold shrink jointing kits including LV 1-5 core, MV 1-core & 3-core options, plus cast resin straight-through and branch joints. Get your reliable cable solutions today!



After the resin solidified, it becomes a compact coffin box to resist water and vapor from the outside of the splice. This coffin box also has outstanding mechanical performance and anti-explosion ...



Nexans cold-shrink joints for up to 36 kV cables offer easy, fast installation with integrated functions and factory-installed accessories, suitable for single-core, paper or polymeric insulated cables.



Both the silicone polymer housing and the stress relief material are assembled on a spiral support tube. This enables the installer to apply the termination on the cable with a high degree of ease and ...

Contact Us

For more information, pricing, or custom data center solutions, please contact us:

Website: <https://www.yoahorroenergia.es>

Email: hello@yoahorroenergia.es

Phone: +233 54 318 7269

Address: Plot 28, Spintex Road, Accra, Greater Accra, Ghana

This document is for informational purposes only. Specifications subject to change without notice.

