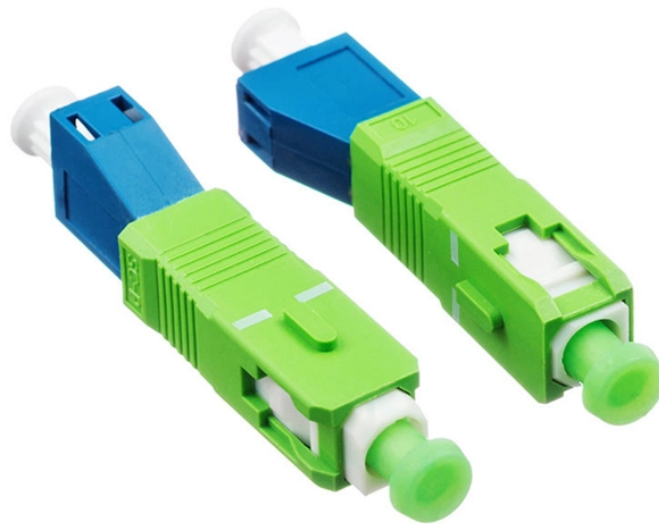


Classification of Industrial Ethernet Switches



Classification of Industrial Ethernet Switches



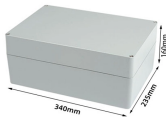
This article will systematically review the core knowledge of industrial switches from three dimensions—classification logic, technical characteristics, and application scenarios—and analyze ...



We will explore the critical differences from office-grade gear, detail key performance features and certifications, explain how to choose between Layer 2 and Layer 3 models, and review ...



What Are The Different Types Of Industrial Ethernet Switches? There are several types of Industrial Ethernet switches, designed to meet specific industrial needs. The main types include unmanaged ...



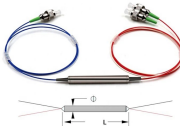
While commercial Ethernet switches focus on cost efficiency and basic networking functions, industrial Ethernet switches prioritize durability, redundancy, and real-time data performance.



They fall into four categories: environmental hardening, network resilience, power architecture, and security posture. Operating temperature range is the most commonly misread spec on a switch ...



There are two main types: unmanaged and managed switches. Unmanaged switches provide basic plug-and-play connectivity without configuration, ideal for simple or edge device networks.



Industrial Ethernet switches are categorized by type, mounting option and speed, and they can be optimized for use with both copper and fiber cables. Unmanaged switches are plug-and ...



When selecting an industrial switch, network architects often classify them by protocol layer (Layer 2, Layer 3) and by whether they support PoE (Power over Ethernet). In this article, we explore the four ...



No longer just a network accessory, the industrial Ethernet switch has evolved from its origins as a simple factory data acquisition device. Today, these switches serve a continually broadening ...



These switches come in two types, managed and unmanaged offer Gigabit, and PoE capabilities with various industry certifications acquired.

Contact Us

For more information, pricing, or custom data center solutions, please contact us:

Website: <https://www.yoahorroenergia.es>

Email: hello@yoahorroenergia.es

Phone: +233 54 318 7269

Address: Plot 28, Spintex Road, Accra, Greater Accra, Ghana

This document is for informational purposes only. Specifications subject to change without notice.

