

# Checking the optical module light value on Huawei NE20



## Overview

Run the following command to view interface information: `display interface <interface-type> <interface-number>` The output includes interface rate, module type, link status (the state being UP is a prerequisite for normal operation) and traffic statistics, which can be used for. Run the following command to view interface information: `display interface <interface-type> <interface-number>` The output includes interface rate, module type, link status (the state being UP is a prerequisite for normal operation) and traffic statistics, which can be used for. How does NE20 check optical power parameter of optical module?

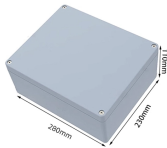
Null Use `dis int` command to check on NE20. Null Null Note: This case is for your reference only. The following uses the Mduletek SFP-10G-LR module connected to a Huawei S6700 switch as an example to introduce how to read information of the connected optical module on a Huawei switch. Figure 1 Schematic Diagram of Optical Module Connected to Switch 1. Run the `display transceiver [interface interface-type interface-number | slot slot-id]`, to view the information on. This repository contains a comprehensive list of

commands for configuring and managing Huawei NE20, NE40, and NE80 routers. These commands are valuable for network administrators and engineers working with Huawei router equipment. This is tested using NetEngine40E Universal Service Router or NE40E running version 8.

## Checking the optical module light value on Huawei NE20



This repository contains a comprehensive list of commands for configuring and managing Huawei NE20, NE40, and NE80 routers. These commands are valuable for network administrators and engineers ...



If the transmit power remains low, replace the optical module or install it in another optical port to check whether it is faulty. If the optical module is faulty, send it to Huawei for repair or ...



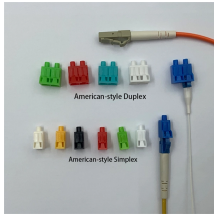
Optical module when the current value of power between the respective upper and lower limits, represents the optical power correctly. Above the upper limit alarm will be generated light power is ...



View the optical module information on Huawei switches and H3C switches through the command



View the optical module information on Huawei switches and H3C switches through the command



Issue Description Q: How does NE20 check optical power parameter of optical module?



Optical modules are widely used in switches, network interface cards (NICs), routers, and other communication devices. During use, reading optical module information helps understand its real ...



Here is an example on how to query or display optical power of an interface in a Huawei Router. This is tested using NetEngine40E Universal Service Router or NE40E running version 8.x OS.



GPON is a next generation for Broadband Technologies from copper into optical connection. so GPON is better from previous generation like ADSL technologies ing Optic as a ...



In this article, ETU-LINK translates the English parameter information of optical module into Chinese, so that you can understand the meaning of these ...



In this article, ETU-LINK translates the English parameter information of optical module into Chinese, so that you can understand the meaning of these parameters when you query DDM on ...



View the general, manufacturing, alarm, and diagnostic information of the specified port optical module. Table 1 Description of the output information of the display transceiver command.

## Contact Us

For more information, pricing, or custom data center solutions, please contact us:

Website: <https://www.yoahorroenergia.es>

Email: [hello@yoahorroenergia.es](mailto:hello@yoahorroenergia.es)

Phone: +233 54 318 7269

Address: Plot 28, Spintex Road, Accra, Greater Accra, Ghana

This document is for informational purposes only. Specifications subject to change without notice.

