

Chad FRP Cable Tray Elbow



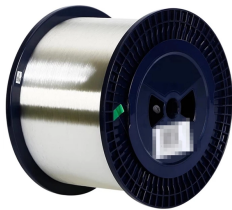
Chad FRP Cable Tray Elbow



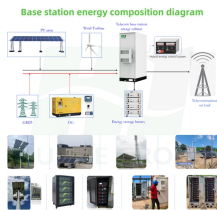
In order to minimize deflection and maximize the safe working load, the cable ladders or cable trays should be installed so that splice joints between horizontal runs sit at the quarter point of the span as ...



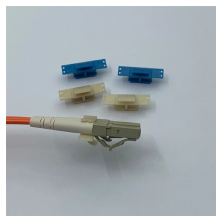
Built using premium resins and advanced manufacturing techniques, our trays provide secure cable routing, withstand extreme weather, and require minimal maintenance—making them the ideal ...



It highlights two main types of cable trays: ladder type and channel type, emphasizing their advantages such as lightweight, anti-corrosion, and easy installation. The catalog also includes information on ...



90° flat elbow. Available for purchase in a full composite system. Customised fitting dimensions are available upon request. Standard cable tray fitting fabricated using stainless steel (SS) angle plates ...



FRP Cable Trays are non-metallic support systems for routing electrical and data cables in industrial and commercial facilities. Made of fiberglass-reinforced plastic, FRP trays are extremely corrosion ...



Lightweight yet robust and resistant to corrosion, fiberglass ladder tray often outperforms galvanized or stainless steel over the life cycle.



Please click the appropriate link below to view the catalog section as a PDF.



FRP cable tray is designed for support the power cables and instrumentation wires in power plants, oil refineries, oil platforms, ships and pulp and paper mills.



Discover what FRP Cable Trays are, their advantages, types, and industrial applications. Learn why FRP trays are the best for modern cable management.



4.07 Cable tray must have integral connection between side rails and rungs consisting of nonmetallic mechanical fasteners and adhesive bonding.

Contact Us

For more information, pricing, or custom data center solutions, please contact us:

Website: <https://www.yoahorroenergia.es>

Email: hello@yoahorroenergia.es

Phone: +233 54 318 7269

Address: Plot 28, Spintex Road, Accra, Greater Accra, Ghana

This document is for informational purposes only. Specifications subject to change without notice.

