

Central loose tube core optical cable



✓ IP65/IP55 OUTDOOR CABINET

✓ WATERPROOF OUTDOOR CABINET

✓ 42U/27U

✓ OUTDOOR BATTERY CABINET



Central loose tube core optical cable



Both central core ribbon and loose tube fiber cables have been widely adopted by the telecom industry, especially for outdoor deployments in all parts of the world.



Central Loose Tube Fiber Optic Cables is characterized by light weight and small diameter, suitable for both aerial and duct installation. The cable can also be ...



Home > Products > 2 core - 24 core Central Loose Tube Armored Fiber Optic Cable GYXTS



Outdoor Armored Central Loose Tube Fiber Optic Cables are constructed with a central tube filled with water blocking jelly, water blocking tape over the tube giving it excellent water and moisture resistance.



Application These optical fiber cables are designed to data transmission in ship and specially in cruise ship where low smoke, halogen free and fire r...



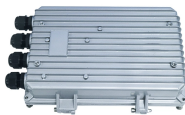
with durable black ink. The cable can be custom made ranging from 2 to 24 fibers, and is suitable for Gigabit Ethernet and 10 Gigabit Ethernet Applications. The cable is UL Certified for OFNP standard ...



Home > Products > 2 core - 24 core Central Loose Tube Armored Fiber Optic Cable GYXTS



The Bynet GYDXTW Central Loose Tube Optical Fiber Ribbon Cable is engineered for outdoor high-capacity transmission systems requiring compact design and efficient ribbon splicing. Utilizing a ...



One can't imagine building cabling without fiber optic cables anymore. These cables are available in a huge variety of different designs. This issue focuses on central and stranded loose tube ...



Belden's Central Loose Tube Fiber Cables support indoor/outdoor use—including conduit, direct burial, aerial and trunking. Built with 250 μm fibers (2-24 count), they're offered in plenum, riser, ...



Central Loose Tube Fiber Cables are ideal for indoor/outdoor applications, including use in conduit, direct burial, lashed aerial and trunking applications.



Central loose tube fiber optic cable contains one tube with 2 - 24 fibers, which is filled with water blocking gel. Either aramid yarn or fiber glass is wound around the tube to provide physical ...



Both central core ribbon and loose tube fiber cables have been widely adopted by the telecom industry, especially for outdoor deployments in all parts of the world.



Explore ETK Kablo's aerial central loose tube fiber optic cables, ideal for pole-to-pole telecom installations with UV-resistant jackets.

Contact Us

For more information, pricing, or custom data center solutions, please contact us:

Website: <https://www.yoahorroenergia.es>

Email: hello@yoahorroenergia.es

Phone: +233 54 318 7269

Address: Plot 28, Spintex Road, Accra, Greater Accra, Ghana

This document is for informational purposes only. Specifications subject to change without notice.

