

Case Study of Outgoing Distribution Box



Length:52.0mm
Small-end inner diameter:2.0mm
Large-end inner diameter:4.8mm
Outer diameter:6.5mm



Case Study of Outgoing Distribution Box



The Marico Ltd Distribution Network Optimization case study is a Harvard Business Review case study, which presents a simulated practical experience to the reader



Power distribution panel is a central controlling hub for electrical distribution in a building where power is received and distributed to the different power utilization source of equipment.



The utility model discloses a power distribution box incoming and outgoing line structure. The back wall of a power distribution box is provided with hoisting lug type hoisting...



In this center, electronic products globally produced will be stored, unpacked, sorted, repacked, and transported to the world market.



The Marico Ltd Distribution Network Optimization case study is a Harvard ...



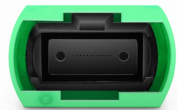
Distribution channels are frequently overlooked as a source of performance enhancement in the Supply Chain. But if you think outside the box, ...



Channel of Distribution course was given at a MBA program. Real-world examples were utilized and applied in class whenever applicable. Students did final projects individually or in a team, by ...



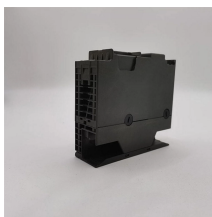
Customizing a distribution box is crucial for meeting project specifications, improving safety and functionality, and protecting against environmental conditions. Learn the factors to ...



In this distribution case study, we examine the implementation of technology to optimize activities within a distribution center and increase visibility and productivity while reducing inventory.



With a limited number of box sizes stocked and available in the distribution center to package orders, some orders will inevitably be shipped in boxes that are larger than needed, thus creating huge ...



In the following, the distribution power transformer features, construction and protection and their influence to the complete distribution system performance are discussed.



This document is a case study report submitted by G. Santosh Kumar to the Department of Management Studies at Vignan's Institute of Information Technology. The report analyzes ...



The utility model discloses a line incoming and outgoing structure of a power distribution box.



General Technical Particulars for LT Distribution Boxes : - The L.T. Distribution Boxes should be of the dimensions as per the drawing & details in the table furnished.

Contact Us

For more information, pricing, or custom data center solutions, please contact us:

Website: <https://www.yoahorroenergia.es>

Email: hello@yoahorroenergia.es

Phone: +233 54 318 7269

Address: Plot 28, Spintex Road, Accra, Greater Accra, Ghana

This document is for informational purposes only. Specifications subject to change without notice.

