

Can the secondary distribution box be placed on the ground



Can the secondary distribution box be placed on the ground



All MTE infrastructure including but not limited to conduits, manholes, box pads, and pull boxes must have a minimum horizontal separation of 36" from gas and water lines.



Failing to install a ground rod for a sub panel can lead to several serious safety issues, including an increased risk of electrical shock for anyone working or living near the sub panel.



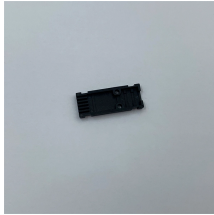
Learn how to install a distribution box safely and correctly. Covers wiring, placement, standards, and expert tips for a compliant setup.



Introduction
Understanding The Components of A Distribution Box
Selecting The Right Distribution Box
Site Preparation and Location Requirements
Electrical Connections and Wiring
Compliance with Standards and Regulations
Conclusion
Proper installation of a distribution box isn't just a technical requirement. It's a vital step in ensuring the safety and efficiency of your entire electrical system. Following best practices reduces the risk of electrical fires, power outages, and other hazards, protecting your property and keeping everyone safe. If you're looking for a reliable,...
See more on eabel
Published: Feb 7, 2025
PG& E



You can't install feeder and branch-circuit conductors in the same raceway, cable, handhole enclosure, or underground box with service conductors [230.7]. Doing this would bypass the feeder or branch ...



Any borings and sub-surface data including ground water elevations, underground utility and structural locations that may be furnished or indicated on the plans are presented only as information that is ...



On a 4-wire, delta-connected, 3-phase system, where the midpoint of one phase winding of the secondary is grounded, the conductor with the resulting 208V to ground (high-leg) must be durably ...



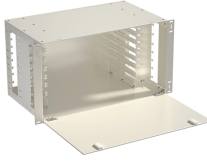
This document provides specifications, ordering information, illustrations, and application instructions for the various sizes of non-concrete and precast concrete enclosures used in PG& E electric ...



The neutral and ground must be separated at sub-panels but bonded using jumper wire at the main service panel. Grounding electrodes (e.g., ground rods) must be used, and a grounding conductor ...



This is the area directly above and in front of the panel, extending from the floor to 6 feet above the top of the equipment. Nothing unrelated to the electrical installation can occupy this zone ...



This document represents the minimum requirements and specifications for the installation of the electrical underground distribution systems fed from padmounted transformation, serving Secondary ...

Contact Us

For more information, pricing, or custom data center solutions, please contact us:

Website: <https://www.yoahorroenergia.es>

Email: hello@yoahorroenergia.es

Phone: +233 54 318 7269

Address: Plot 28, Spintex Road, Accra, Greater Accra, Ghana

This document is for informational purposes only. Specifications subject to change without notice.

