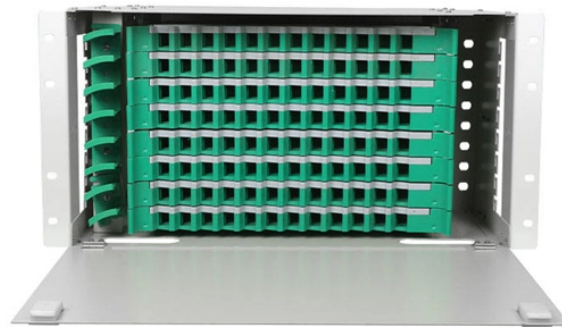


Can the optical and electrical ports of the switch communicate with each other



Overview

The answer is yes, however, there are prerequisite requirements to Etherchannel (read this: Understanding EtherChannels). So what is network switch combo port?

How to differentiate the combo ports from Ethernet ports on an Ethernet switch?

How to use combo SFP port?

We will make a comprehensive introduction of the combo port and answer all the questions. What Is Combo Port?

A combo port, also known as an. Switches come in three types: those with only electrical ports, those with only optical ports, and those with a mix of both electrical and optical ports. If the other end of the link is copper, then you

need a copper SFP or GBIC. If it's 2 copper ports, you probably need a Gigabit crossover cable between the 2. RJ45 ports serve access-layer copper connections; SFP/SFP+ ports enable flexible 1G/10G uplinks; SFP28 delivers 25G for modern data centers; QSFP+ and QSFP28 support high-density 40G/100G spine-leaf. Optical interfaces transmit data using lightwaves through glass or plastic fiber optic cables. These optical transceiver modules receive the electrical signal output from your device and translate it into light pulses.

Can the optical and electrical ports of the switch communicate with



There is no photoelectric conversion process, and the interface type is RJ45. You only need to insert a network cable to connect to the electrical port to transmit. The current common ...



Choosing between optical and electrical interfaces is a crucial decision when building high-performance networks. The ports, cables, and connectors are completely different, and there are pretty vital ...



The electrical port (RJ45) and its corresponding optical port (SFP) are logically multiplexed. Users can choose either the SFP or RJ45 interface ...



Optical ports on switches typically require the insertion of optical modules for data transmission over fiber optics. In cases where there is a shortage of electrical ports on the switch, ...



Assuming it's connecting them, then you can't do it directly. You need to have the correct media and speeds to do it. Typically with fiber you have an SFP (or GBIC) to plug in and adapt to ...



This guide provides an engineering-level overview of switch port technologies, real-world deployment mapping, and detailed selection methodology for campus, enterprise, and data center ...



Combo ports feature both electrical (RJ45) and optical (SFP) connections that are logically multiplexed, meaning only one type can be used at a time.



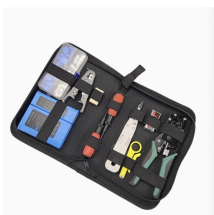
Discover the essential guide to optical transceiver interoperability and compatibility. Learn how to ensure seamless network connectivity, avoid vendor lock-in, and optimize your fiber optic ...



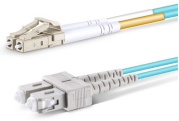
A: Yes, an SFP port can be an uplink port. Many switches and routers have dedicated SFP uplink ports allowing high-speed connections to other devices or network segments.



This article will explain the difference between optical port and electrical port from two aspects! Let's first understand the concepts and meanings of optical ports and electrical ports.



A: Yes, an SFP port can be an uplink port. Many switches and routers have dedicated SFP uplink ports allowing high-speed connections to other ...



The electrical port (RJ45) and its corresponding optical port (SFP) are logically multiplexed. Users can choose either the SFP or RJ45 interface based on network requirements, but ...

Contact Us

For more information, pricing, or custom data center solutions, please contact us:

Website: <https://www.yoahorroenergia.es>

Email: hello@yoahorroenergia.es

Phone: +233 54 318 7269

Address: Plot 28, Spintex Road, Accra, Greater Accra, Ghana

This document is for informational purposes only. Specifications subject to change without notice.

