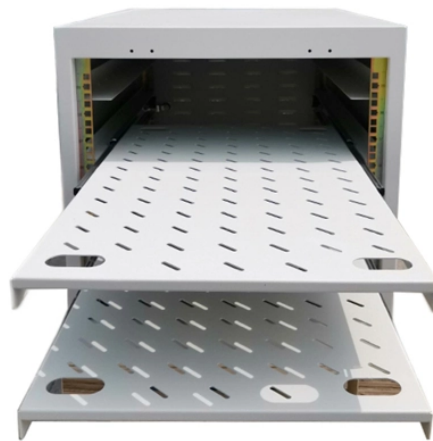


Can fire hoses be used for cable trays



Overview

Install fire barriers within the tray to isolate different fire zones. Only use fireproof trays for flame containment or isolation, not for unrelated. Cable tray systems help organize and support electrical cables efficiently, but improper installation or maintenance can increase the risk of electrical fires. Understanding proper cable tray fire safety practices is essential for protecting buildings, equipment, and occupants. Commercial buildings. The following charts give the number of 3M pillows needed to completely firestop an opening that cable tray passes through. Where cables pass through shafts, walls, slabs, or enter electrical panels or cabinets, openings shall be tightly sealed. Question 1: Can mechanical utility piping or tubing containing water or compressed air be installed in cable trays with electrical cables?

Answer: No. UL Listed Systems Concrete Wall - C-AJ-4056 3 HR F-Rating, 3/4 HR T-Rating Gypsum.



Use of fire-resistant or low-smoke, zero-halogen (LSZH) cable types in critical areas. Providing tray covers where needed to protect against falling debris, dripping liquids, or hot particles.



Question 1: Can mechanical utility piping or tubing containing water or compressed air be installed in cable trays with electrical cables? Answer: No. Cable trays are a support system for electrical cables, ...



With our fire protection for cable systems, we ensure that your lines meet the highest safety standards and are reliably protected in the event of an emergency.



Use this product in new construction or update your fire protection in a renovation - the optional mounting bracket opens easily allowing retrofit installations.



Cable tray systems help organize and support electrical cables efficiently, but improper installation or maintenance can increase the risk of electrical fires. Understanding proper cable tray ...



A generic guideline developed by the Cable Tray Institute indicates that cable trays should not be filled in excess of 40-50% of the inside area of the tray or of the tray's maximum weight based on the cable ...



Cable tray installation must comply with specific technical standards to ensure electrical safety, system reliability, and long-term maintainability. This document ...

Contact Us

For more information, pricing, or custom data center solutions, please contact us:

Website: <https://www.yoahorroenergia.es>

Email: hello@yoahorroenergia.es

Phone: +233 54 318 7269

Address: Plot 28, Spintex Road, Accra, Greater Accra, Ghana

This document is for informational purposes only. Specifications subject to change without notice.

