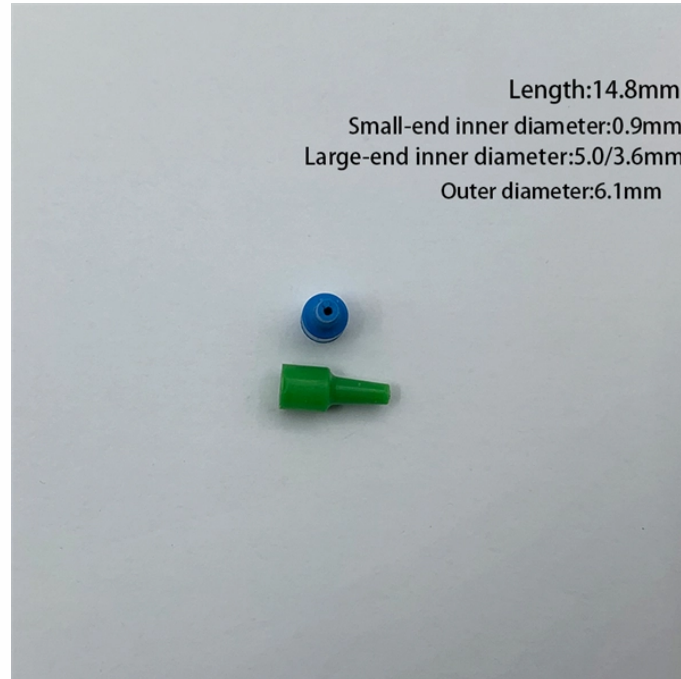


# Can an i-type speaker column be connected to a beam splitter



## Overview

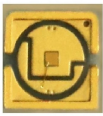
The Column may also be connected in a "split" configuration, either to provide redundancy-in case of amplifier or speaker failure, the total Column output will not be lost-or to provide for separate inputs from different sources, for instance, from both paging and. The Column may also be connected in a "split" configuration, either to provide redundancy-in case of amplifier or speaker failure, the total Column output will not be lost-or to provide for separate inputs from different sources, for instance, from both paging and. The AtlasIED ALX-D range comprises digitally steerable, multichannel array loudspeaker systems for the commercial installation market. Designed for applications with problematic acoustics, the combination of advanced steering algorithms, powerful DSP, and efficient amplification gives the system. The Shure Model SR102 and SR103 Speaker Columns are speaker systems designed for use with Shure Model SR105 or similar high-power amplifiers in sound reinforcement applications. When properly installed and connected, the SR102 and SR103 Columns will provide outstanding performance. Their wide. The Bose Professional MSA12X powered beam-steering array loudspeaker is specially engineered to excel in vocal intelligibility and musicality, even in

acoustically challenging spaces. Twelve processed and amplified transducers create a precise vertical sound beam that covers the entire audience. Polar Focus Type 5 Custom Beam Attachment with PY0 universal fitting for Audio Rigging. Allows a loudspeaker cluster to be mounted to a large or thick level I-beam, larger than the standard jaw-type beam clamp will allow. Working Load Limit (WLL) is 550 lbs. General information and target group 1. Setup location. In this post, you'll find clear and detailed speaker wiring diagrams to help (and that you can print out if you like, too!). It's actually pretty simple once you learn the.

## Can an i-type speaker column be connected to a beam splitter



The Column may also be connected in a "split" configuration, either to provide redundancy-in case of amplifier or speaker failure, the total Column output will not be lost-or to provide for separate inputs ...



Polar Focus Custom Beam Attachment for large or thick I-Beams. We offer a full line of equipment for rigging loudspeakers and line arrays.



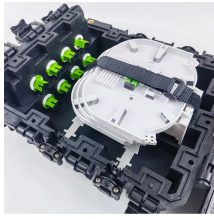
From PB 08 and PB 248, the Pan Beam column speakers offer the capability of multi-beam steering technology. This allows for the generation of more than one beam from one column.



Get some beam clamps which you can then hang threaded rod from, then add fire treated wood blocking to the threaded rod. Once you have that you can mount your speakers to the wood blocking.



This can be achieved with passive filters in the cabinet or with active filters. It's common for columns to be combined as multiple cabinets to achieve better performance as taller systems for ...



We all enjoy music and speakers make that possible - but it's confusing if you're not sure how to connect them the right way. In this post, you'll find clear and detailed speaker wiring diagrams ...



This can be achieved with passive filters in the cabinet or with active filters. It's common for columns to be combined as multiple cabinets to achieve ...



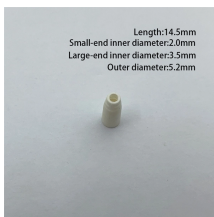
To further optimize venue coverage and performance, the acoustic center can be adjusted over the entirety of the column length, and independent split beams can be deployed if necessary.



This document discusses different types of beam connections, including flexible, moment resistant, and semi-rigid connections. Flexible connections are further divided into framed, unstiffened seated, and ...



It's a bit large, or potentially large, for nearly any speaker that can safely go on a stand. Making the jump from a couple speakers on tripods per side to flown or "large format ground stack" ...



The MSA12X goes beyond conventional loudspeakers with its dual-beam functionality, enabling the vertical sound beam to be split into two, providing simultaneous coverage for separate areas such as ...

## Contact Us

For more information, pricing, or custom data center solutions, please contact us:

Website: <https://www.yoahorroenergia.es>

Email: [hello@yoahorroenergia.es](mailto:hello@yoahorroenergia.es)

Phone: +233 54 318 7269

Address: Plot 28, Spintex Road, Accra, Greater Accra, Ghana

This document is for informational purposes only. Specifications subject to change without notice.

