

Can an 86-cell box be used to install fiber optic panels



Overview

It is very thin and matches with other A86 panels in homes, and also meet the open or concealed cabling for optical cables. Coordinating with FC strip-type optical adaptor, it generates more options in term of fiber interfaces for users, all SC and SC/FC are usable. With dust- device to prevent dust from entering, the embedded is easy to install, the internal space is designed reasonably, and it is equipped with strip for management and maintenance. Various parts such as splicing connectors, fiber optic field connectors, and fusion protection sleeves can be. Indoor 2port Fiber Optic Distribution Box, 86 Socket Patch Panel Quick Detail: Name: 86 Socket Panel Max capacity: 4 fibers Self-clip design,easy to operate 4 port for LC, SC, ST, FC Can be installed 1*4 PLC Indoor and outdoor, waterproof Material: High impact plastic Suitable for SC,FC adapters. Amazon. com Voluntary 30-Day Return Guarantee: You can return many items you have purchased within 30 days following delivery of the item to you. You can find out more about the. The 86 Type Optic Wall Outlet Termination Box is a versatile fiber optic terminal box designed for FTTH networks. These are the way to get started. Should you use fiber optics for your communications system?

What are its advantages and disadvantages?

Isn't fiber optics still too new for everybody to adopt it?

Is it hard to design and install.

Can an 86-cell box be used to install fiber optic panels



Snap the cover design greatly reduces the difficulty of installation, thin box body ...



Selecting the proper fiber optic enclosure is key for a reliable network. The different types of enclosures—whether pole-mounted, aerial-mounted, or underground—offer solutions for many ...



This guide breaks down the most common fiber optic enclosure types, their technical features, real-world applications, and how to choose the right one for your network.



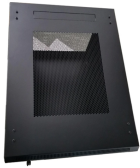
Can be installed 1*4 PLC Indoor and outdoor, waterproof Material: High impact plastic Suitable for SC,FC adapters Description: Fiber Optic Splitter Distribution Box is made of high impact plastic. It ...



Is it hard to design and install fiber optic networks? Do they require maintenance? This short guide is designed to help answer those questions for users pondering the choices and/or planning an ...



Various parts such as splicing connectors, fiber optic field connectors, and fusion protection sleeves can be installed inside to meet the installation and modes of various fiber optic cables (especially butterfly ...



As the name suggests, wall-mounted fiber optic distribution boxes are installed on walls or other vertical surfaces. These boxes are compact and suitable for indoor applications where space ...



Snap the cover design greatly reduces the difficulty of installation, thin box body panels and other electrical junction box matches, and is suitable for fiber optic cabling and dark



The 86 Type Optic Wall Outlet Termination Box is a versatile fiber optic terminal box designed for FTTH networks. It features clamping, splicing, fixation, and distribution in one compact unit, with easy cable ...



Selecting the proper fiber optic enclosure is key for a reliable network. The different types of enclosures—whether pole-mounted, aerial-mounted, or ...



The 86*86*12.7mm, Ultra-slim 2 Port Fiber Wall Socket provides fiber connectivity to office and home, ideal for wall mount and desktop application.



Designed to simplify installation and improve experience, Legrand Fiber enclosures are ideal solutions for fiber networks in your data centers and building networks.

Contact Us

For more information, pricing, or custom data center solutions, please contact us:

Website: <https://www.yoahorroenergia.es>

Email: hello@yoahorroenergia.es

Phone: +233 54 318 7269

Address: Plot 28, Spintex Road, Accra, Greater Accra, Ghana

This document is for informational purposes only. Specifications subject to change without notice.

