

Can a 10 Gigabit optical module be adaptive



Overview

10G Tunable DWDM SFP+ transceivers are compact, hot-pluggable optical modules that combine DWDM technology with tunable capabilities, enabling them to adjust their wavelength within a specified range of the DWDM spectrum. First of all, we need to understand the basic concepts of 10G optical modules and Gigabit optical ports. 10G optical modules are optical transmission devices used to transmit 10Gbps data rates and are commonly used in high-speed data centers and enterprise network environments. They use specific. Can a gigabit optical module chip be used in a 10-gigabit optical module?

1. Definitions: The Difference One “Plus” Makes SFP (Small Form-factor Pluggable) Originally designed to replace the bulky GBIC, the standard SFP supports speeds up to 1. In this guide, we dive into Fibrecross's portfolio of 10G SFP+ Optical Transceivers, explain how BiDi optics work, compare module. The scope of this article is to look through the technical aspects of the compatibility of the QSFP28 modules with 10Gb links, their significance concerning network resource covering, expansion of the network and

protection of an investment. The research conducted aims at identifying the current.

Can a 10 Gigabit optical module be adaptive



Amphenol's 10G SFP+ optical modules include SFP+ AOC. They are compliant with SFP+ MSA, SFF-8431 and SFF-8472, and are mainly used in Telecom, Wireless, InfiniBand, and ...



When it comes to compatibility between optical networking equipment and optical modules, it is critical to ensure a proper match. In this installment, we will explore the compatibility ...



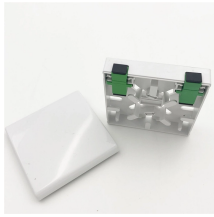
Juniper's portfolio of qualified 10G and 1G optical transceivers are low-cost multipurpose modules available in footprint-optimized form factors for deployment across ACX, EX, MX, PTX, and QFX ...



Discover how the QSFP28 interface can seamlessly support 10G, 25G, and 100G data rates. Explore optic types and transceiver options for optimal performance.



A common industry question is: Can the chips used in a 1G optical module work in a 10G module? The short answer is no, because chip design, modulation methods, bandwidth, and signal ...



10G Tunable DWDM SFP+ transceivers are compact, hot-pluggable optical modules that combine DWDM technology with tunable capabilities, enabling them to adjust their wavelength within ...



In this guide, we dive into Fibrecross's portfolio of 10G SFP+ Optical Transceivers, explain how BiDi optics work, compare module options, and share best practices for deployment.



Fully compliant with the XGS-PON standards, multiple generations of PON services can interoperate, coexist, migrate, and provide differentiated service levels over the same optical fiber ...



The answer depends on which direction you are going: Can I plug a 1G SFP into a 10G SFP+ port? Generally, Yes. Most enterprise switches (Cisco, Aruba, Juniper) allow 10G SFP+ ports ...



This comprehensive guide dives deep into the SFP-10G-ER optical transceiver module. Learn its technical specifications, key applications, compatibility nuances, advantages over other 10G ...

Contact Us

For more information, pricing, or custom data center solutions, please contact us:

Website: <https://www.yoahorroenergia.es>

Email: hello@yoahorroenergia.es

Phone: +233 54 318 7269

Address: Plot 28, Spintex Road, Accra, Greater Accra, Ghana

This document is for informational purposes only. Specifications subject to change without notice.

