

Cable trays for cable trenches



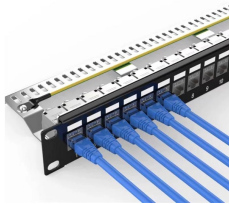
Cable trays for cable trenches



Properly designed and installed cable tray system provides reliable support of control, communication, data, instrumentation and power cabling and wiring.



Cable trays are above-ground systems that support and organize cables. Cable trenches are underground channels that protect cables. The biggest difference is how they're installed—trays ...



Waskey precast cable trench systems provide durable, safe, and easy-to-install solutions for managing underground cables efficiently.



Explore sheet steel and wire mesh cable tray for robust cable management. Ideal for various environments, ensuring safety, efficiency, and durability.



Our cable tray systems securely hold and protect cables and come in many models and sizes, solid bottom and ventilated.



Cable tray systems provide a structured and efficient solution for routing and supporting electrical and data cables in commercial and industrial environments. Designed as an accessible alternative to ...



ABB designs and manufactures cable tray systems, including perforated tray, cable ladder, channel tray and strut (metal framing).



Discover cable management solutions featuring steel construction and durable finishes. Organize your network, power, and data cables efficiently.



Cable Tray and Cord Reels Precision engineered. Constructed from high-quality welded steel wire, Cablofil® Wire Mesh Cable Tray is the result of decades of research and over 94,000 miles of ...



Explore the differences between cable trays and cable trenches for effective cable management. Learn about their design, applications, advantages, and limitations, and how Hutaib ...

Contact Us

For more information, pricing, or custom data center solutions, please contact us:

Website: <https://www.yoahorroenergia.es>

Email: hello@yoahorroenergia.es

Phone: +233 54 318 7269

Address: Plot 28, Spintex Road, Accra, Greater Accra, Ghana

This document is for informational purposes only. Specifications subject to change without notice.

