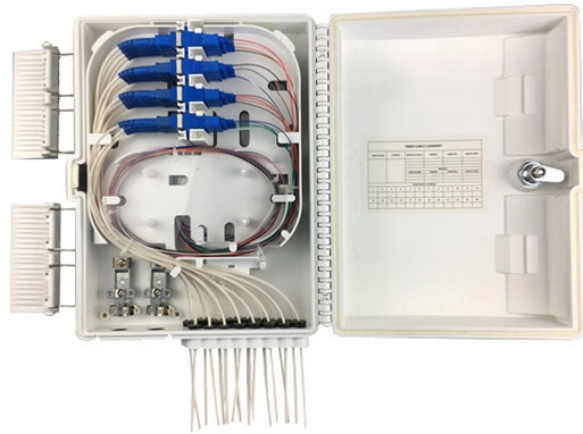


Cable tray tee bend naming and model



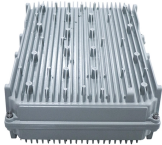
Cable tray tee bend naming and model



Our wind certification report provides you with list of acceptable B-Line series cable tray supports, fittings and covers based off of the environmental conditions, cable loading, and type of cable tray in your ...



Use this guide to learn the most effective installation practices when installing Cablofil tray. Each example of bends and tee's clearly illustrate proper tray cutting combined with recommended usage ...



Cable Tray Ladder SC/SLW Type NOBI Series - Free download as PDF File (.pdf), Text File (.txt) or read online for free. This document provides information on standard ladder, elbow, tee, and cross ...



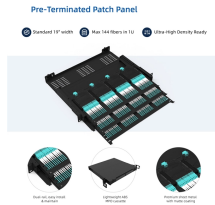
To facilitate easy installation of cable trays we also manufacture accessories e.g. Vertical bend, horizontal bend, cross and horizontal tee. Our range includes vertical bend, horizontal bend, cross ...



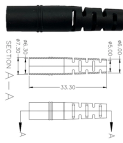
Diagrammed below are fitting support locations as tested with specially constructed NEMA 20C cable tray fittings as an alternative to the support locations diagrammed in NEMA VE-2. Please consult the ...



Tee is used to create branch points in cable tray systems, allowing for the easy distribution of cables in different directions. It's ideal for organizing cables in complex layouts.



Fitting and accessories. with the same or different width of the cable run. All fittings are available in sizes and types corresponding to the straight cable tray sections. These fittings include: elbow, ...



The Ladder Tray features light, rugged, tubular steel construction. It is designed for mechanical support and strain relief in long runs of cable and creates a smooth gradual bend for cable. Rail and stringer ...



One Kit contains hardware for one tee or two 90 degree bends. Slotted design fits any size tray and eliminates precise tray alignment.



If you have the bend width, radius, straight line extensions at the two ends of the bend, and/or other additional data, you can improve the calculation taking those into account.



This publication is intended as a practical guide for the proper and safe* installation of cable ladder systems, cable tray systems, channel support systems and associated supports.



For ease of ordering, each individual product is identified by a "Catalog Number", comprising letters and numbers. Note: Channels and other accessories have specific catalogue ...



Discover all CAD files of the "Cable trays" category from Supplier-Certified Catalogs SOLIDWORKS, Inventor, Creo, CATIA, Solid Edge, autoCAD, Revit and many more CAD software but also as STEP, ...

Contact Us

For more information, pricing, or custom data center solutions, please contact us:

Website: <https://www.yoahorroenergia.es>

Email: hello@yoahorroenergia.es

Phone: +233 54 318 7269

Address: Plot 28, Spintex Road, Accra, Greater Accra, Ghana

This document is for informational purposes only. Specifications subject to change without notice.

