

Cable tray installation on integrated support frame



Cable tray installation on integrated support frame



Compare the speeds and prices of cable internet providers in your area. Find the best deal for you and get connected today!



Discover efficient cable tray support structures for optimal cable management. Learn about hanger, wall-mounted, and Unistrut systems for safer installations.



This document provides details on installing cable trays and their support systems. It includes diagrams showing how to mount cable trays on walls using pre ...



Pay your bill, find free WiFi, check your email, set up your voicemail, program your DVR and more!



Cable tray length is selected based on the load to be supported, the distance between the supports (also referred to as the span), and handling and installation constraints.



The load capacity of the cable trays according to the support width can be read off in the diagram using load curves - here, shown as an example for a cable tray with the tray widths 100 to 600 mm.



Pay one low price for 300 Mbps WiFi with equipment and unlimited data. Plus, a line of Xfinity Mobile included for 1 year. And get a \$100 Amazon Gift Card. Online only, ends 5/18. Offer ends 5/18. ...



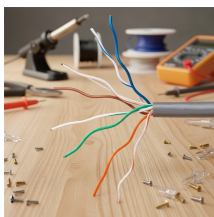
Whether you're planning MEP installations such as pipe and cable tray supports, or access platforms and integrated floors for energy and industry projects, you'll only need one versatile, lightweight, and ...



Find information on all cable TV providers in Colorado. Find all the best cable TV providers in your area using our simple to use tools.



Save with deals on reliable high-speed Internet, premium cable TV and sports, 5G mobile service and home phone. Low monthly prices with no contracts.



Our wind certification report provides you with list of acceptable B-Line series cable tray supports, fittings and covers based off of the environmental conditions, cable loading, and type of cable tray in your ...



Where metal supports for metal cable trays are bolted to the tray and are in good electrical contact with the grounded structural metal frame of a building, the tray shall be deemed to be bonded to ground.



This guide covers the critical steps, from selecting the right electrical cable tray and performing accurate cable fill calculations to managing a safe cable pull through and ensuring all bonding and grounding ...



Looking for the best Cable TV, Internet, or Streaming TV service? CableTV helps you compare providers, plans & deals in your zip.



Learn more about how fiber internet compares to cable internet, including the technology, benefits, availability and more.



Compare the best cable TV services of 2026. We analyze Xfinity, Spectrum, and Cox based on technical specs, channel lineups, and hidden fees to find the right fit for your home.



With AT& T, you get fast, reliable speeds to keep you connected — whether you choose AT& T Internet 100 Mbps or AT& T Fiber® plans offering speeds up to 300 Mbps, 500 Mbps, 1 GIG, 2 GIG, or even 5 ...



Only approved and undamaged cable trays and accessories (e.g., bends, tees, reducers, covers, supports, hangers, bolts) shall be used for installation.



Cox connects you to the things you do and love. Get blazing fast internet, cable TV and smart home solutions. Find your deal today.



To install the cable tray supports, first find the required elevation from the floor to the bottom of the cable tray and establish a level line with a laser or a nylon string.



Some applications may require the cable tray to support the weight of a single, dead object in addition to the cable loads. Specifications typically require this to be applied at the midpoint of the span between ...

Contact Us

For more information, pricing, or custom data center solutions, please contact us:

Website: <https://www.yoahorroenergia.es>

Email: hello@yoahorroenergia.es

Phone: +233 54 318 7269

Address: Plot 28, Spintex Road, Accra, Greater Accra, Ghana

This document is for informational purposes only. Specifications subject to change without notice.

