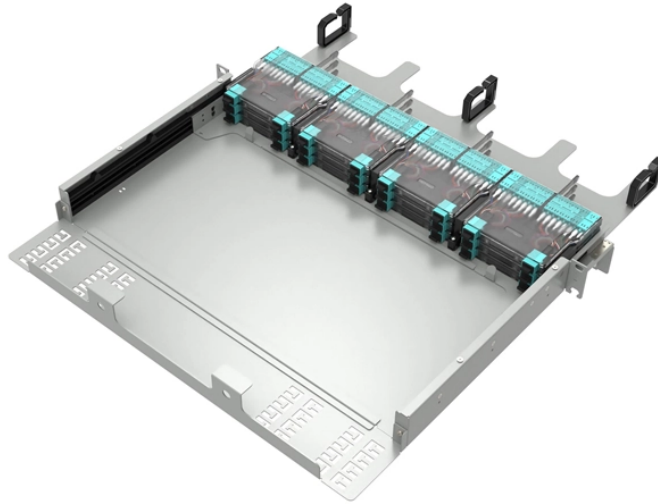
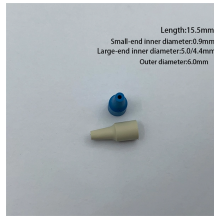


Cable tray bends with no misalignment



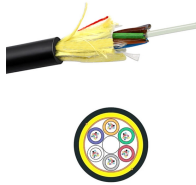
Cable tray bends with no misalignment



For engineers, contractors and facility managers, understanding common problems in steel cable tray installations - and knowing how to avoid ...



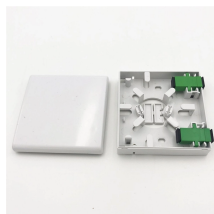
Students trading aid on how best to put an internal 90 degrees bend in steel cable tray. Includes a full demonstration on how bend steel cable tray using a crimping to.



This comprehensive guide investigates the most frequent wire management challenges faced in real-world setups and demonstrates how the correct cable tray accessories may address them.



This guide covers the critical steps, from selecting the right electrical cable tray and performing accurate cable fill calculations to managing a safe cable pull through and ensuring all bonding and grounding ...



The design allows for efficient cable organization without occupying too much space. DURABLE AND STURDY: The cable management trays were described as robust and solid, capable of securely ...



The design allows for efficient cable organization without occupying too much ...



For engineers, contractors and facility managers, understanding common problems in steel cable tray installations – and knowing how to avoid them – is essential for ensuring system ...



The Ladder Tray features light, rugged, tubular steel construction. It is designed for mechanical support and strain relief in long runs of cable and creates a smooth gradual bend for cable. Rail and stringer ...



Use this guide to learn the most effective installation practices when installing Cablofil tray. Each example of bends and tee"s clearly illustrate proper tray cutting combined with recommended usage ...



Learn how to identify, resolve, and prevent cable tray installation errors. This guide provides actionable tips and insights to ensure efficient electrical system setups.



Cablobend Systems give you the freedom for true cable tray flexibility. Create bends and drops that you need—without cutting. Perfect for data centers.



The assembly guide below will help the cable tray installer make the bends and others without difficulty even he had never installed wire mesh cable trays before. Guide for making bends, tees, crosses, ...

Contact Us

For more information, pricing, or custom data center solutions, please contact us:

Website: <https://www.yoahorroenergia.es>

Email: hello@yoahorroenergia.es

Phone: +233 54 318 7269

Address: Plot 28, Spintex Road, Accra, Greater Accra, Ghana

This document is for informational purposes only. Specifications subject to change without notice.

