

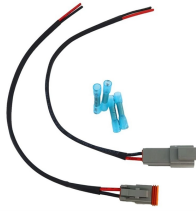
Cable Tray Laying Rules



Overview

NEC Article 392 outlines the key rules for installing and maintaining industrial cable tray systems. These systems, made from metal or plastic, are open structures designed to support electrical conductors, ensuring proper organization and safety. The following pages address the 2014 National Electrical Code® requirements for cable tray systems as well as design. Article Summary: A compliant cable tray installation requires a thorough understanding of NEC Article 392, proper structural support, and precise installation techniques. It instructs us on how to construct them, where to locate them, and how to stuff them with wires without using too much.

Cable Tray Laying Rules



Cable tray layout must take into consideration the design limits of the cable. To minimize damage and verify integrity after installation, follow the practices outlined in cable handling and ...



This guide covers the cable tray types and their appropriate applications, the fill rules for each configuration, ampacity derating requirements, separation of power and signal cables, and the ...



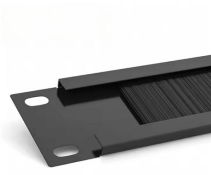
Cable tray cable installation generally follows these steps: Inspect cables before installation Prepare and inspect the tray Set up installation equipment Lay cables correctly in trays ...



This guide covers the critical steps, from selecting the right electrical cable tray and performing accurate cable fill calculations to managing a safe cable pull through and ensuring all bonding and grounding ...



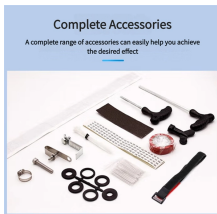
Historically, the NEC has allowed cable trays, but has lacked specific guidelines for sizing conductors and using smaller conductors like PV wire and DG cable on rooftops. The 2023 update ...



Core rules for selecting, installing, grounding, and filling cable trays—clearances, materials, separation, and bonding explained.



This article provides a comprehensive framework that governs various aspects of cable tray installations, including the types of cables that are deemed acceptable for use, requirements for ...



Master NEC Article 392 with our comprehensive guide. Learn essential cable tray requirements for installation, grounding, and fill capacity to ensure full electrical compliance.



These documents: ANSI/NEMA VE-1, Metal Cable Tray Systems; NEMA VE-2, Cable Tray Installation Guidelines; and NEMA FG-1, Non Metallic Cable Tray Systems, are an excellent industry resource in ...



Ensure safety and compliance in your cable tray installation. Discover the 5 golden rules covering NEC standards, load capacity, grounding, and support spacing.

Contact Us

For more information, pricing, or custom data center solutions, please contact us:

Website: <https://www.yoahorroenergia.es>

Email: hello@yoahorroenergia.es

Phone: +233 54 318 7269

Address: Plot 28, Spintex Road, Accra, Greater Accra, Ghana

This document is for informational purposes only. Specifications subject to change without notice.

